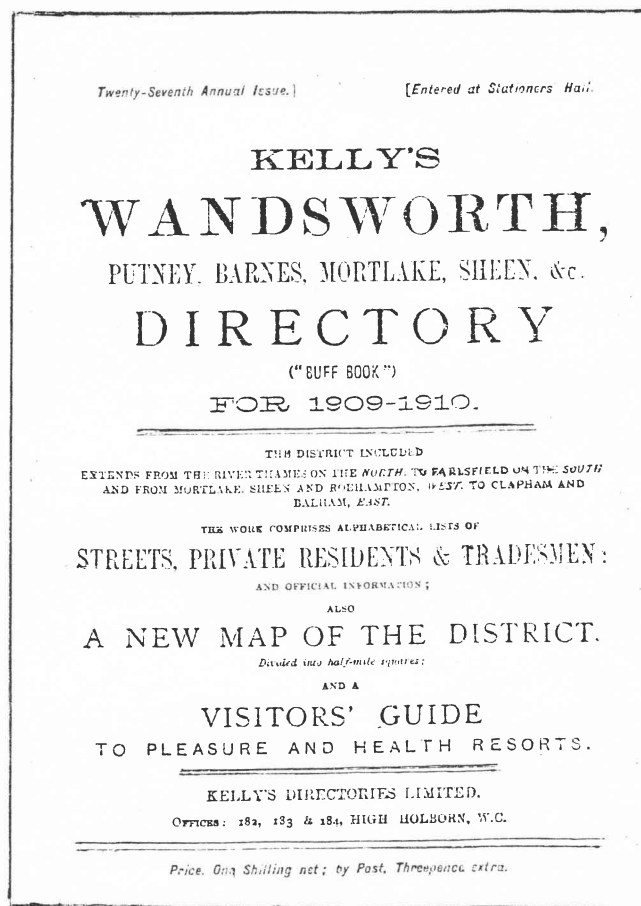


GUIDES TO LOCAL HISTORY SOURCES - NO.1

DIRECTORIES

BY

RITA J. ENSING



WANDSWORTH HISTORICAL SOCIETY

GUIDES TO LOCAL HISTORY SOURCES - NO.1

DIRECTORIES

BY

RITA J. ENSING

WANDSWORTH HISTORICAL SOCIETY

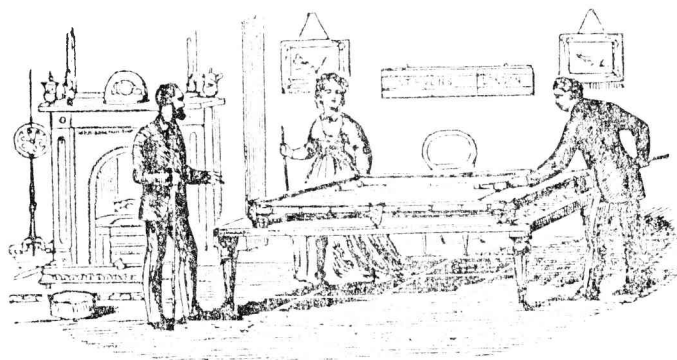
ISBN 0-905121-01-5

© Wandsworth Historical Society, 1985
93 Bramfield Road, London SW11 6PZ

Contents

	Preface	3
	Introduction	4
Ch.I	Early London Directories	5
Ch.II	The Post Office London Directory	5
Ch.III	Kelly's London Suburban Directories	6
Ch.IV	Early Directories of the Wandsworth Area	7
Ch.V	Kelly's Local Directories: The "Buff Books"	10
Ch.VI	Union List of Kelly's Directories	15
	Balham, Tooting & Merton	16
	Brixton and Clapham	17
	Putney & Roehampton	18
	(Kennington), Battersea & South Lambeth	18
	Sydenham, Norwood & Streatham	19
	Wandsworth	21
Ch.VII	Later Nineteenth-century Directories other than Kelly's	23
Ch.VIII	Using Directories for Local History Research	29
Ch.IX	Using Directories: Some Notes & Warnings	30
	Bibliography	31
	Appendix: Libraries Where Directories Can Be Consulted	32

STEVENS & SONS,
Sole Inventors and Manufacturers of the
REGISTERED MINIATURE BILLIARD TABLE FOR THE DRAWING ROOM.



Registered Miniature Billiard Tables can be used upon any ordinary table, fitted with adjusting screw toes, by which the level can be readily obtained. Manufactured in sizes 5 ft. and 6 ft., including with each Ivory Billiard Balls, Cues, Rules, &c.

Prices, £4 10s., £5 10s., and £6 10s.

STEVENS & SONS, Billiard Table Manufacturers

Office: Villiers St., Charing Cross Station.

ST. JOHN'S HILL, CLAPHAM JUNCTION, S.W.

Advertisement from Strong's Directory, 1880

Acknowledgment

Our thanks to Wandsworth Local History Librarian, Tony Shaw, for providing the photocopies from which the pages of directories have been reproduced in this publication.

Preface

This is the first of a new series of guides to local history sources to be published by the Wandsworth Historical Society.

The listings and catalogue in the guides will relate to the area of the present London Borough of Wandsworth, but, because of past history and changes of boundaries, neighbouring areas will naturally come into them.

It is important to stress, however, that the whole series is to be published with a view to being useful to a wider readership than just Wandsworth local historians.

Firstly, the types of sources - and future guides will include maps, newspapers and voters' lists - are relevant and useful to the study of any place. Each guide will try to trace the background and development of source material.

Secondly, there will be lists of libraries and record offices where sources are to be found. In London especially local history sources are likely to be scattered in unexpected places. The chances of history have often led to material about one part of London being deposited or acquired miles away in another borough.

Thirdly, the writers of the guides will try to show the kind of information to be found in each type of source and give some idea of how they may be used for local history research.

The Wandsworth Historical Society will welcome any comments and suggestions for future publications.

The writer of the present guide would like to thank staff of those libraries and record offices listed in the appendix for their kindness and willing help while the guide was being compiled.

Rita J. Ensing

Introduction

Directories are publications which appear, usually at regular intervals, often annually, containing alphabetical and sometimes classified lists of trades and progressions, and lists of private residents. Local directories usually also list streets in alphabetical order, showing the private or commercial occupant at each number. They are often preceded by a few pages of general and official information.

This guide is concerned only with local directories, with particular reference to the London Borough of Wandsworth and those parts of Streatham and Clapham which formed part of the Metropolitan Borough of Wandsworth before 1965. Much of the material, however, is useful for all of the London area. Chapters VIII & IX will be useful, it is hoped, to local historians of any urban or suburban area, and chapters I to VII relate to London directories generally. The introduction to Kelly's Buff Books applies to all the London suburbs, and the union catalogue in this chapter, as will be seen, goes beyond Wandsworth into much of South London.

To avoid confusion about the name Wandsworth, the term 'Wandsworth area' is used throughout the text for the area of the Metropolitan Boroughs of Battersea and Wandsworth before 1965, whereas 'Wandsworth' denotes the old town and parish of Wandsworth, as distinct from Putney, Battersea, etc.

CHAPTER I: EARLY LONDON DIRECTORIES

The earliest directory for London appeared in 1677, but was only a simple alphabetical list of names of merchants in the City of London. In the eighteenth century, directories began to include the more fashionable private residents in and around Mayfair, and trades appeared in classified order.

In the early nineteenth century, some of the earlier general London directories began to extend to the suburbs and include the Wandsworth area. The following publishers' directories are worth looking at, but generally there are very few names listed, private or commercial. Most of them had short lives, and did not last beyond the mid-century. After 1860 Kelly's London Suburban Directory began to compete.

Holden's triennial directory. From 1802.

The alphabetical list of tradesmen's names for the whole of London includes Wandsworth area names, but they are not separately listed.

Johnstone's London commercial guide, 1817.

The first directory to combine streets, commercial, private and classified trades in one volume. Only a very few names are listed in the section for the Wandsworth area.

Pigot & Co's London and Provincial new commercial directory. From 1827-8. Earlier editions did not extend to the suburbs. Wandsworth, Clapham etc. appear in the Middlesex section; Wandsworth, as an example, has one page, but has only three names for the 'nobility' compared with Putney's twenty-two.

These are not in the Wandsworth Collection, but researchers can see them at other libraries (see Appendix of Libraries). The Guildhall and the British Library have the largest collections, but the Victoria Library and Kensington Central Library have a good selection.

CHAPTER II: THE POST OFFICE LONDON DIRECTORY

In 1800 appeared the first edition of the annual, and still thriving, Post Office London Directory, with the title "New annual directory containing a list alphabetically arranged of the principal merchants, traders of eminence..." The following year, it was published as the "Post Office London Directory." The connection with the Post Office is that it was originally compiled by and for the use of letter carriers, i.e. postmen, who gathered the information on their rounds of London's un-numbered streets. In 1836 Critchett, who held the copyright, sold it to Frederic Kelly.

Kelly was not an innovator, and the main improvements and additions, a classified trades and professions section in 1840 and a court directory and a streets section in 1841, had already appeared years before in other directories. Unlike the others, however, it has survived to the present day.

Until the publication of the Suburban directory in 1860, the Post Office London Directory included only the City of London, Westminster and Southwark and some adjacent parts.

CHAPTER III: KELLY'S LONDON SUBURBAN DIRECTORIES

In 1860 Kelly's introduced a major new series of directories with the title *The Post Office London Suburban Directory*. The preface to the first edition states that it would commence where the London directory ceased and the two works would cover an area of 12 miles radius. It was published at irregular intervals at first; it appeared every four years from 1868, then every two years from 1892, and annually from 1901 to 1933.

The Suburban Directory was divided into two volumes - North and South of the Thames - which could be bought separately; a map was included of the area covered. The preface also states that the sections would be the same as for the London Directory, namely Streets, Commercial, Court and Trades, but it was not quite as simple as that. The Wandsworth area is to be found in the Southern Suburbs volume, and the following notes refer to that series.

The first section was an index to all the streets in the two volumes, and includes all those separately named terraces, closes, places, etc. which formed part of the main streets - a forerunner of the index at the front of the current Kelly's London Directory which pinpoints blocks of flats and other separately named large buildings.

This was followed by the so-called Streets section, which gave the suburbs in alphabetical order, of which the Wandsworth area ones were Balham Hill, Battersea, Clapham, Putney, Roehampton, Sreatham, Tooting and Wandsworth. Summerstown was introduced later. Only Battersea, Clapham (which had formerly been in the London Directory) and Wandsworth were given street listings. For the others, there were only two alphabetical lists of names, private and commercial. In later editions, street sections were gradually introduced, but at the end of the century Roehampton and Summerstown still lacked them.

After the streets came the commercial and court sections referred to in the preface, which were alphabetical listings for the whole Southern Suburbs volume (repeating and incorporating the alphabetical lists of the smaller suburbs with no streets sections).

The Trades section (also one listing for the whole volume) includes useful headings which were not strictly trades or professions, such as registrars of births, deaths and marriages; literary and scientific institutions, and lunatic asylums. Finally, the Conveyance section gave details for each suburb of omnibuses and carriers from London.

Some improvements were made in later editions. For example, in the fourth edition of 1868 a list of churches and chapels was added, but not separately for each suburb; the 1901 edition listed the police stations and local authorities, these being the L.C.C. and the new Metropolitan Boroughs. The main developments were simply of regular publication and of increased size. From 1904, because of its increasing size, it was limited to the County of London area with the new title *London County Suburban Directory*, and excluded the more distant suburbs; but this meant, of course, that all the Wandsworth area was still included. It ceased publication as a separate directory in 1933, and the so-called county suburbs were included in the main London directory from 1934, but with ever-diminishing local detail, especially of residents.

The Wandsworth collection has the following years: 1884, 1892, 1898, 1902, 1906, 1908, 1909, 1914, 1920, 1923, 1924, 1926, 1927, 1929, 1930-33.

Guildhall has a complete set, with a long, though incomplete run of duplicates on the open access shelves.

CHAPTER IV: EARLY DIRECTORIES FOR THE WANDSWORTH AREA

For the Wandsworth area there is a small number of directories, some covering only a part of the area, and most vanishing after one or two editions. They are all in the Wandsworth Collection and in the Guildhall and British Libraries.

Batten 1827 and 1841

A Key and companion to the plan of Clapham with its Common and environs containing an historical and topographical description of the parish and manor, with a catalogue of indigenous plants growing in the neighbourhood. List of population, rates, and other parochial occurrences from 1603 to 1827. Embellished with five views of the church and common drawn expressly for this work. Clapham: H.N. Batten, 1827.

As its title indicates, this was not primarily a directory, but it did include a 24-page list of the principal inhabitants and traders arranged under streets in topographical order. Unusually, the existence of the working class is acknowledged by showing the total number of cottages at their location in each street - which at least adds to the topographical picture.

Clapham, with its commons and environs...and a list of the inhabitants corrected to 1841...Clapham: David Batten, 1841.

This was only a reprint of the main text of 1827, and the list of inhabitants contained less topographical detail than the first edition.

Whetstone, 1847.

Whetstone & Co.'s Court guide and directory of the following places: Brixton, Clapham, Kingston, Kew, Mortlake, Putney, Richmond, Streatham, Upper and Lower Tooting, Wandsworth, &c., &c., &c., to which is added classified lists of the professions and trades; also a list of all the public buildings....of London.... London: Whetstone, 1848. Various paging.

There are separate alphabetical court guides and classified trades lists for all the places in the title. There is in addition to the directory a three-page history of Wandsworth, Putney and Roehampton. The advertisements are almost all of Kingston and Richmond traders.

Metallurgicon, 1867.

The Metallurgicon local directory: Wandsworth Putney Wimbledon Roehampton Clapham Balham Tooting Battersea Barnes &c. Wandsworth: Joseph W. Gray, 1867. 394pp

This directory was very much a local effort, being published by Joseph Gray, who had an extensive hardware business at No.12 Wandsworth High Street, hence the rather strange title. The compiler writes of his fifteen months labour (every house had been visited by his agent); he stresses his accuracy and his intimate acquaintance with the district.

After the index to streets and places, there is a thirty-page historical and descriptive introduction. There is a considerable amount of topographical detail in the streets section, which has separate listings for each place, followed by general local information - MPs, magistrates, Boards of Guardians, Overseers, churches with times of services, transport, postal services etc. There were many advertisements, but not all local.

There was no later edition.

Number.

- Mrs. Batley, (Manor House,) *Seminary for young Ladies.*
 Mr. Balaam, *Academy for young Gentlemen.*
 80. Henry Desborough, Esq.

Two Cottages.

Rev. Wm. Dealtry (Rectory).

One Cottage.

83. Thomas Rogers, Esq.
 Mrs. Dent, *Seminary for young Ladies.*
 Thomas Lambert, Esq.

NAG'S HEAD LANE.

NORTH ROW.

Fifteen Cottages.

NORTH PLACE.

John Ault, *Assistant Overseer.*

Eight Cottages.

86. Niven Kerr, Esq.
 (Return on the opposite side.)

87. Valentine Chaplin, Esq.
 William Franks, Esq.
 A. and C. Mills, *Carpenters, &c.*
 Two Cottages.

Truclove, *Butcher.*Worrall, *Greengrocer.*Wilson, *Chimney Sweep.*

Lancefield, *City, Blackfriars and Westminster*
Coach Office, Glass Coaches, &c.

(On the left, the Parochial Schools.)

Number.

90. William Horne, Esq.
 D. T. Johnson, Esq.
 Mrs. Dennis.
 One Cottage.
 Roots, *Taylor.*
 Frederick Hewitt, Esq.
 Charles Elliott, Esq. (Grove House).
 Rev. G. C. Gorham.
 Mary Haynes, *Plumber, Glazier, Painter, &c.*
 Stafford, *Hairdresser.*
 Guthrie, *Carrier.*
 Bell's *Westminster Coach Office.*
 Jaques, *Whitesmith.*
 Clement, *Grocer, &c.*
 Vass, *Farrier.*
 Four Cottages.
 Bone, *Glass Coaches, Flys, &c. to let.*
 (On the left, the POLYGON.)
 CLAPHAM COMMON, NORTH SIDE.
 Mrs. Phillips.
 Henry Butterworth, Esq.
 Parrott's and Pearson's *Surgery.*
 Mrs. Moss.
 T. G. Lloyd, Esq.
 Mr. Parrott, *Surgeon.*
 Miss Hawkes, *Seminary for young Ladies.*
 Five Cottages.
 Miss Riv.
 100. Mr. Hall, *Academy for young Gentlemen.*
 Rev. M. M. Preston.

Salter H J, 2 Louvaine rd
 Sandels J, 18 Louvaine rd
 Sarson M, Common
 Saundess E, 6 North ter, North rd
 Saunders J, 28 St John's Hill grove,
 Selmes W, 4 Park villas, Merton rd
 Sennett C A, Summers town
 Sewell General, West hill
 Short Mrs, 4 Spencer vil, Southfields
 Slack R, Ashley lodge, 18 Wimbledon Park rd
 Smith F, Gothic vil, St John's hill
 Smith F, Thanet lodge, Wimbledon Park rd
 Smith G, Craven house school, Easthill
 Smith J, Boys' school, East hill
 Smith John, 2 Hedingham rd, Spencer rd
 Smith John, Summers town
 Smith L W, 9 Obersteine rd
 Smith T S, Southfields
 Smith W, Common
 Snellgrove H, Park rd
 Spencer E, 2 Clyde vil, Spencer rd
 Spurling Mrs, Park road
 Stamp H, 37 Obersteine rd
 Steel W, 7 Russell rd
 Stenning E, Ashdown com
 Stevens C P, 3 New rd
 Stevens W R, Green villa, St Ann's Hill rd
 Stevenson J G, Park rd
 Stewart F, 4 Cologne rd
 Stewart L, 35 Obersteine rd
 Stockman B, 5 Merton rd
 Steven Capt, New rd
 Sugg J W, 13 Russell rd
 Sutherland Mrs, Park rd
 Sutherland W, 13 Louvaine rd
 Swennell G, Devon vil, Common
 Sykes J, Park rd

T aylor Mrs, 2 Portal vil, Spencer rd
 Taylor R, 5 Somerset ter, Merton rd
 Terry James, 3 East hill villas
 Thompson C, 8 Louvaine rd
 Thompson Rev E, M.A., the Parsonage, Wandsworth
 common
 Thorke J, Southfields
 Todd C W, 8 Hopefield villas, Wandsworth com
 Todd G, Common
 Tomkies R, 20 St John's Hill grove
 Turner J, 16 St John's Hill grove
 Turner J, 21 Auckland rd
 Turner Mrs, Ladies school, 3 Elm terrace
 Urwick S, St John's hill
 Varnham Miss, 4 Hedingham villas, Spencer road
 Vaughan J H, 8 Spencer villas, Southfields
 Wade G, 2 Champion ter, Champion st, St Ann's rd
 Waller J, Cromer vil, West hill rd
 Walker Mrs, Common
 Wallis W G, 27 St John's hill grove
 Ward R, 34 Obersteine rd
 Warren, 10 Russell rd
 Warrington K, Nightingale cot, Wandsworth com
 Watson Edward, 23 Auckland road
 Watson J, Risenheim, West hill
 Watson Miss, Berkely lodge, West hill
 Watson T, the Gallies, Wandsworth com
 Watson T J, Common
 Weatherley S, 15 Auckland rd
 Webster A, 25 Obersteine rd
 Weeder W F, 12 Louvaine rd
 Welch C, Common
 Weyman D, Park rd
 Wheeler R B, Park rd
 Wheeler Henry, Wandsworth com
 White G L, West hill
 White H, St John's hill

Green's 1869.

R. Green & Co's South London Blue Book and Royal Court Guide for Surrey containing the principal Private Houses of the following places:- Brixton, Streatham, Clapham, Balham, Mortlake, Barnes, Putney, Wandsworth, Wimbledon, Tooting, Camberwell &c. &c. New Wandsworth: R. Green & Co., 1869. 124pp

Each place has an alphabetical list of persons with varying detail for the address, some are complete with house number and street, others are much briefer - e.g. 'Wandsworth Common.'

CHAPTER V: KELLY'S LOCAL DIRECTORIES: THE "BUFF BOOKS"

The local directory may be said to have reached its essential form with the smaller-sized Kelly's directories known as "Buff Books" from their popular sub-title which derived from the buff colour of the standard cloth binding. Because there were so many in the series (thirty-three in 1898 for the London area alone), and because they survived for nearly ninety years from the early 1880s to the second World War, they will be described in some detail. This will be followed by a union catalogue of the holdings of the six titles useful for the Wandsworth area at selected libraries.

The buff books were published originally by a firm called Hutchings & Crowsley which had offices in the City in New Broad Street, and three branch works in London. The earliest copy examined is the Sydenham and Norwood directory for 1881 at the Minet Library, which has its original cover bound in. When Kelly's took over publication after 1886, the buff book had already attained the standard pattern, which Kelly's preserved, although it must be remembered that Hutchings & Crowsley would have had the model of the main Kelly's Post Office London Directory when they started publication. Their achievement was firstly in launching a series of really local directories for the rapidly growing London suburbs, including much more detail than the main London directory, and secondly in keeping up virtually annual publication. The handy form, selling at about 1/6d, was evidently very popular, as new titles were added during those first few years.

The main sections of the directories were:-

1. Description of the area and official information;
2. Directory of streets;
3. Commercial directory;
4. Private residents;
5. Classified trades.

The first section gave a brief description and history of the parish or borough. This was followed by general useful information, including official information - MPs, Sheriffs, members of the local authorities (Civil Vestries, District Boards, Poor Law Guardians, etc. and later the Borough Council members and London County Council representatives). Where the directory covered more than one parish or borough, information for both would usually be given. Churches, chapels of all denominations and their ministers, schools, police and public institutions were listed.

The illustrations show typical pages from the directory sections.

BOLINGBROKE GROVE—cont.	20 Oskende Mike (Elmhurst)	106 Hammond William (Bolingbroke lodge)
Chatham rd.	19 Lamprey Chas. (Westwood tower)	Chatham rd.
Oskenden Mrs.	18 Warner (George Samuel)	Chatham rd.
54 Jernan Charles	17 Dolphyn Richard Jones (St. Milborne)	Chatham rd.
52 Clark Henry	16 Sims Mrs. (Chapman)	Chatham rd.
52 Wheeler Miss	15 Winnett Wm. (Hollywood)	Chatham rd.
51 Holloway George Wm.	14 Stuckey Mrs. (Worthington)	Chatham rd.
50 Hodges Mrs. B. A.	13 James Mrs. (Berwyn)	Chatham rd.
49 Mercer William	12 Lawrence Edw. (Lamdon)	Chatham rd.
47 Bryan Walter	11 Lord Miss (The Brackens)	Chatham rd.
47 Bryan Miss Hilda, girls & boys school	10 Hale T. J. (Hazeldean)	Chatham rd.
46 McManis & Myles, surgeons	9 Under Denham	Chatham rd.
45 Myres John, F.R.C.S.I.	8 Wimpers John Thos. (Rockfield house)	Chatham rd.
45 Riddoch Fredk. James	7 Lamb Edw. (Kildare)	Chatham rd.
44 Honeywell rd.	6 Smith Sydney	Chatham rd.
44 Winger John	5 Fawcett William John	Chatham rd.
43 Bishop James	4 Russell Robert	Chatham rd.
42 Hamer William	3 Fennings Edwin	Chatham rd.
41 Carey William, M.B.	2 Willis Martin D. (Cliftonville)	Chatham rd.
L.R.C.S.D.S., surgeon	1 Oram Richard Randall, R.C.S., M.R.C.S., surgeon (Cherry)	Chatham rd.
40 Timothy Arthur James, surveyor	West side:	Chatham rd.
39 Clarke & Watts, physicians & surgeons	Trigg (George) furniture	Chatham rd.
39 Wals Harry, physician & surgeon	8 Beatty Charles	Chatham rd.
38 Ward Rev. A. Gordon	7 Gumber Arthur	Chatham rd.
M.A. (St. Michael's ho.)	6 Bone Frederick D.	Chatham rd.
37 MacIntyre Robert	5 Bradford Percy James	Chatham rd.
36 Hall Wm. (Blenheim)	3 Spencer Wm. Robert	Chatham rd.
35 Greenwood John Wm.	2 Hill William P.	Chatham rd.
34 Cole Frederick C.	Bolingbroke Grove:	Chatham rd.
33 Bishop Mrs. J. J. (North house)	116 Houlton Mrs.	Chatham rd.
32 Ivont Mrs.	115 Shaw Mary	Chatham rd.
31 Lewings Miss	114 Marshall James Styles	Chatham rd.
30 Stimpson Wm. Speir	113 Kennitham Joseph	Chatham rd.
23 Blanchett Fredk. Harry (The Elms)	112 Crouch James	Chatham rd.
24 Powell Mrs. (Mortyrmawr)	111 Hall John	Chatham rd.
27 Benham Hs. Wilfred	110 Charles Alfred	Chatham rd.
26 Derry rd.	109 Cook George Edward	Chatham rd.
Board School & Home for Blind Boys (Linden lodge)	108 Trevell Chas. Arthur	Chatham rd.
25 Methodist Deaconesses Home & Training Institution, Miss Bushell, supt.	107 Beffell William Henry	Chatham rd.
24 Coventry Edward	106 Smith Percy Streeter	Chatham rd.
23 Berry Thomas Darby (Barton house)	105 Harrison Harold	Chatham rd.
22 Blenkarne rd.	104 Hayward Hobert	Chatham rd.

BORRDALE RD.

BOUTFLOWER RD.

MILLS BATHAM

Wandsworth. Map F 17.
From Iron mill rd. to N. Ann's hill.

Bathesda. Map G 16.
From Battersea viaduct to the railway.

7 Moore Mrs.
9 Hardy Thomas Maskell
11 Clode Mrs.
13 Hannon Henry Wm.
15 Hannon Henry Wm.
17 Hall Mrs.
19 Jerrard Albert
21 Tucker John
23 Taylor Walter
25 Jaegerman Charles John
27 Baller Edwin
29 Smith Albert R.
31 Nicholls Robert Chas.
33 Herbert William
35 Kelly Francis Charles
37 Harrison William
39 Price William John
41 Chester Frederick
43 Hummel Miss
45 Martin Frederick
47 Saunders John William
49 Down William J.
51 Penn Mrs.
53 James Alfred John
55 Stone William Henry
57 Simmonds Arthur John
59 Downey William John
61 Harding Miss
63 Deakins Francis & Son, builders

1 Clelliff Edwin, genl. shop
3 Austin William Edw.
5 Sibler John
7 Lee Mrs.
9 Sampson John
11 Hogg Alfred Henry
13 Smith William
15 Bert Joseph
17 Duckett Henry
19 Dawson John
21 Vincent Aubrey
23 Bulman Mrs.
25 Nicholls Mrs.
27 Jellie Walter
29 Limes Harry Joseph
31 Thacker John
33 Ashling William
35 Shepherd Edwin
37 Jay John
39 Gatherspool James
41 Elliott William
43 Elliott Mrs., dressma.
45 Ellis Richard
47 Hayward William

1 Cunniffingham M F 8.
2 Cowley Albert, dairy
3 Kramer Harris, bootma.
4 Park Miss Louise, genl. shop
5 Woodward Mrs. Jizzio, laundry
6 Sewell Miss
7 & 8 Pain Mrs.
9 Tring Mrs.
10 Tittl Mark Henry
11 Matter Benjamin
12 & 13 Home for the Aged
14 & 15 Elder Christian
16 Francis Mrs.
17 Driscoll J. H. & Sons, builders
18 & 19 Home for the Aged
20 & 21 Home for the Aged
22 & 23 Home for the Aged
24 & 25 Home for the Aged
26 & 27 Home for the Aged
28 & 29 Home for the Aged
30 & 31 Home for the Aged
32 & 33 Home for the Aged
34 & 35 Home for the Aged
36 & 37 Home for the Aged
38 & 39 Home for the Aged
40 & 41 Home for the Aged
42 & 43 Home for the Aged
44 & 45 Home for the Aged
46 & 47 Home for the Aged
48 & 49 Home for the Aged
50 & 51 Home for the Aged
52 & 53 Home for the Aged
54 & 55 Home for the Aged
56 & 57 Home for the Aged
58 & 59 Home for the Aged
60 & 61 Home for the Aged
62 & 63 Home for the Aged
64 & 65 Home for the Aged
66 & 67 Home for the Aged
68 & 69 Home for the Aged
70 & 71 Home for the Aged
72 & 73 Home for the Aged
74 & 75 Home for the Aged
76 & 77 Home for the Aged
78 & 79 Home for the Aged
80 & 81 Home for the Aged
82 & 83 Home for the Aged
84 & 85 Home for the Aged
86 & 87 Home for the Aged
88 & 89 Home for the Aged
90 & 91 Home for the Aged
92 & 93 Home for the Aged
94 & 95 Home for the Aged
96 & 97 Home for the Aged
98 & 99 Home for the Aged
100 & 101 Home for the Aged
102 & 103 Home for the Aged
104 & 105 Home for the Aged
106 & 107 Home for the Aged
108 & 109 Home for the Aged
110 & 111 Home for the Aged
112 & 113 Home for the Aged
114 & 115 Home for the Aged
116 & 117 Home for the Aged
118 & 119 Home for the Aged
120 & 121 Home for the Aged
122 & 123 Home for the Aged
124 & 125 Home for the Aged
126 & 127 Home for the Aged
128 & 129 Home for the Aged
130 & 131 Home for the Aged
132 & 133 Home for the Aged
134 & 135 Home for the Aged
136 & 137 Home for the Aged
138 & 139 Home for the Aged
140 & 141 Home for the Aged
142 & 143 Home for the Aged
144 & 145 Home for the Aged
146 & 147 Home for the Aged
148 & 149 Home for the Aged
150 & 151 Home for the Aged
152 & 153 Home for the Aged
154 & 155 Home for the Aged
156 & 157 Home for the Aged
158 & 159 Home for the Aged
160 & 161 Home for the Aged
162 & 163 Home for the Aged
164 & 165 Home for the Aged
166 & 167 Home for the Aged
168 & 169 Home for the Aged
170 & 171 Home for the Aged
172 & 173 Home for the Aged
174 & 175 Home for the Aged
176 & 177 Home for the Aged
178 & 179 Home for the Aged
180 & 181 Home for the Aged
182 & 183 Home for the Aged
184 & 185 Home for the Aged
186 & 187 Home for the Aged
188 & 189 Home for the Aged
190 & 191 Home for the Aged
192 & 193 Home for the Aged
194 & 195 Home for the Aged
196 & 197 Home for the Aged
198 & 199 Home for the Aged
200 & 201 Home for the Aged
202 & 203 Home for the Aged
204 & 205 Home for the Aged
206 & 207 Home for the Aged
208 & 209 Home for the Aged
210 & 211 Home for the Aged
212 & 213 Home for the Aged
214 & 215 Home for the Aged
216 & 217 Home for the Aged
218 & 219 Home for the Aged
220 & 221 Home for the Aged
222 & 223 Home for the Aged
224 & 225 Home for the Aged
226 & 227 Home for the Aged
228 & 229 Home for the Aged
230 & 231 Home for the Aged
232 & 233 Home for the Aged
234 & 235 Home for the Aged
236 & 237 Home for the Aged
238 & 239 Home for the Aged
240 & 241 Home for the Aged
242 & 243 Home for the Aged
244 & 245 Home for the Aged
246 & 247 Home for the Aged
248 & 249 Home for the Aged
250 & 251 Home for the Aged
252 & 253 Home for the Aged
254 & 255 Home for the Aged
256 & 257 Home for the Aged
258 & 259 Home for the Aged
260 & 261 Home for the Aged
262 & 263 Home for the Aged
264 & 265 Home for the Aged
266 & 267 Home for the Aged
268 & 269 Home for the Aged
270 & 271 Home for the Aged
272 & 273 Home for the Aged
274 & 275 Home for the Aged
276 & 277 Home for the Aged
278 & 279 Home for the Aged
280 & 281 Home for the Aged
282 & 283 Home for the Aged
284 & 285 Home for the Aged
286 & 287 Home for the Aged
288 & 289 Home for the Aged
290 & 291 Home for the Aged
292 & 293 Home for the Aged
294 & 295 Home for the Aged
296 & 297 Home for the Aged
298 & 299 Home for the Aged
300 & 301 Home for the Aged
302 & 303 Home for the Aged
304 & 305 Home for the Aged
306 & 307 Home for the Aged
308 & 309 Home for the Aged
310 & 311 Home for the Aged
312 & 313 Home for the Aged
314 & 315 Home for the Aged
316 & 317 Home for the Aged
318 & 319 Home for the Aged
320 & 321 Home for the Aged
322 & 323 Home for the Aged
324 & 325 Home for the Aged
326 & 327 Home for the Aged
328 & 329 Home for the Aged
330 & 331 Home for the Aged
332 & 333 Home for the Aged
334 & 335 Home for the Aged
336 & 337 Home for the Aged
338 & 339 Home for the Aged
340 & 341 Home for the Aged
342 & 343 Home for the Aged
344 & 345 Home for the Aged
346 & 347 Home for the Aged
348 & 349 Home for the Aged
350 & 351 Home for the Aged
352 & 353 Home for the Aged
354 & 355 Home for the Aged
356 & 357 Home for the Aged
358 & 359 Home for the Aged
360 & 361 Home for the Aged
362 & 363 Home for the Aged
364 & 365 Home for the Aged
366 & 367 Home for the Aged
368 & 369 Home for the Aged
370 & 371 Home for the Aged
372 & 373 Home for the Aged
374 & 375 Home for the Aged
376 & 377 Home for the Aged
378 & 379 Home for the Aged
380 & 381 Home for the Aged
382 & 383 Home for the Aged
384 & 385 Home for the Aged
386 & 387 Home for the Aged
388 & 389 Home for the Aged
390 & 391 Home for the Aged
392 & 393 Home for the Aged
394 & 395 Home for the Aged
396 & 397 Home for the Aged
398 & 399 Home for the Aged
400 & 401 Home for the Aged
402 & 403 Home for the Aged
404 & 405 Home for the Aged
406 & 407 Home for the Aged
408 & 409 Home for the Aged
410 & 411 Home for the Aged
412 & 413 Home for the Aged
414 & 415 Home for the Aged
416 & 417 Home for the Aged
418 & 419 Home for the Aged
420 & 421 Home for the Aged
422 & 423 Home for the Aged
424 & 425 Home for the Aged
426 & 427 Home for the Aged
428 & 429 Home for the Aged
430 & 431 Home for the Aged
432 & 433 Home for the Aged
434 & 435 Home for the Aged
436 & 437 Home for the Aged
438 & 439 Home for the Aged
440 & 441 Home for the Aged
442 & 443 Home for the Aged
444 & 445 Home for the Aged
446 & 447 Home for the Aged
448 & 449 Home for the Aged
450 & 451 Home for the Aged
452 & 453 Home for the Aged
454 & 455 Home for the Aged
456 & 457 Home for the Aged
458 & 459 Home for the Aged
460 & 461 Home for the Aged
462 & 463 Home for the Aged
464 & 465 Home for the Aged
466 & 467 Home for the Aged
468 & 469 Home for the Aged
470 & 471 Home for the Aged
472 & 473 Home for the Aged
474 & 475 Home for the Aged
476 & 477 Home for the Aged
478 & 479 Home for the Aged
480 & 481 Home for the Aged
482 & 483 Home for the Aged
484 & 485 Home for the Aged
486 & 487 Home for the Aged
488 & 489 Home for the Aged
490 & 491 Home for the Aged
492 & 493 Home for the Aged
494 & 495 Home for the Aged
496 & 497 Home for the Aged
498 & 499 Home for the Aged
500 & 501 Home for the Aged
502 & 503 Home for the Aged
504 & 505 Home for the Aged
506 & 507 Home for the Aged
508 & 509 Home for the Aged
510 & 511 Home for the Aged
512 & 513 Home for the Aged
514 & 515 Home for the Aged
516 & 517 Home for the Aged
518 & 519 Home for the Aged
520 & 521 Home for the Aged
522 & 523 Home for the Aged
524 & 525 Home for the Aged
526 & 527 Home for the Aged
528 & 529 Home for the Aged
530 & 531 Home for the Aged
532 & 533 Home for the Aged
534 & 535 Home for the Aged
536 & 537 Home for the Aged
538 & 539 Home for the Aged
540 & 541 Home for the Aged
542 & 543 Home for the Aged
544 & 545 Home for the Aged
546 & 547 Home for the Aged
548 & 549 Home for the Aged
550 & 551 Home for the Aged
552 & 553 Home for the Aged
554 & 555 Home for the Aged
556 & 557 Home for the Aged
558 & 559 Home for the Aged
560 & 561 Home for the Aged
562 & 563 Home for the Aged
564 & 565 Home for the Aged
566 & 567 Home for the Aged
568 & 569 Home for the Aged
570 & 571 Home for the Aged
572 & 573 Home for the Aged
574 & 575 Home for the Aged
576 & 577 Home for the Aged
578 & 579 Home for the Aged
580 & 581 Home for the Aged
582 & 583 Home for the Aged
584 & 585 Home for the Aged
586 & 587 Home for the Aged
588 & 589 Home for the Aged
590 & 591 Home for the Aged
592 & 593 Home for the Aged
594 & 595 Home for the Aged
596 & 597 Home for the Aged
598 & 599 Home for the Aged
600 & 601 Home for the Aged
602 & 603 Home for the Aged
604 & 605 Home for the Aged
606 & 607 Home for the Aged
608 & 609 Home for the Aged
610 & 611 Home for the Aged
612 & 613 Home for the Aged
614 & 615 Home for the Aged
616 & 617 Home for the Aged
618 & 619 Home for the Aged
620 & 621 Home for the Aged
622 & 623 Home for the Aged
624 & 625 Home for the Aged
626 & 627 Home for the Aged
628 & 629 Home for the Aged
630 & 631 Home for the Aged
632 & 633 Home for the Aged
634 & 635 Home for the Aged
636 & 637 Home for the Aged
638 & 639 Home for the Aged
640 & 641 Home for the Aged
642 & 643 Home for the Aged
644 & 645 Home for the Aged
646 & 647 Home for the Aged
648 & 649 Home for the Aged
650 & 651 Home for the Aged
652 & 653 Home for the Aged
654 & 655 Home for the Aged
656 & 657 Home for the Aged
658 & 659 Home for the Aged
660 & 661 Home for the Aged
662 & 663 Home for the Aged
664 & 665 Home for the Aged
666 & 667 Home for the Aged
668 & 669 Home for the Aged
670 & 671 Home for the Aged
672 & 673 Home for the Aged
674 & 675 Home for the Aged
676 & 677 Home for the Aged
678 & 679 Home for the Aged
680 & 681 Home for the Aged
682 & 683 Home for the Aged
684 & 685 Home for the Aged
686 & 687 Home for the Aged
688 & 689 Home for the Aged
690 & 691 Home for the Aged
692 & 693 Home for the Aged
694 & 695 Home for the Aged
696 & 697 Home for the Aged
698 & 699 Home for the Aged
700 & 701 Home for the Aged
702 & 703 Home for the Aged
704 & 705 Home for the Aged
706 & 707 Home for the Aged
708 & 709 Home for the Aged
710 & 711 Home for the Aged
712 & 713 Home for the Aged
714 & 715 Home for the Aged
716 & 717 Home for the Aged
718 & 719 Home for the Aged
720 & 721 Home for the Aged
722 & 723 Home for the Aged
724 & 725 Home for the Aged
726 & 727 Home for the Aged
728 & 729 Home for the Aged
730 & 731 Home for the Aged
732 & 733 Home for the Aged
734 & 735 Home for the Aged
736 & 737 Home for the Aged
738 & 739 Home for the Aged
740 & 741 Home for the Aged
742 & 743 Home for the Aged
744 & 745 Home for the Aged
746 & 747 Home for the Aged
748 & 749 Home for the Aged
750 & 751 Home for the Aged
752 & 753 Home for the Aged
754 & 755 Home for the Aged
756 & 757 Home for the Aged
758 & 759 Home for the Aged
760 & 761 Home for the Aged
762 & 763 Home for the Aged
764 & 765 Home for the Aged
766 & 767 Home for the Aged
768 & 769 Home for the Aged
770 & 771 Home for the Aged
772 & 773 Home for the Aged
774 & 775 Home for the Aged
776 & 777 Home for the Aged
778 & 779 Home for the Aged
780 & 781 Home for the Aged
782 & 783 Home for the Aged
784 & 785 Home for the Aged
786 & 787 Home for the Aged
788 & 789 Home for the Aged
790 & 791 Home for the Aged
792 & 793 Home for the Aged
794 & 795 Home for the Aged
796 & 797 Home for the Aged
798 & 799 Home for the Aged
800 & 801 Home for the Aged
802 & 803 Home for the Aged
804 & 805 Home for the Aged
806 & 807 Home for the Aged
808 & 809 Home for the Aged
810 & 811 Home for the Aged
812 & 813 Home for the Aged
814 & 815 Home for the Aged
816 & 817 Home for the Aged
818 & 819 Home for the Aged
820 & 821 Home for the Aged
822 & 823 Home for the Aged
824 & 825 Home for the Aged
826 & 827 Home for the Aged
828 & 829 Home for the Aged
830 & 831 Home for the Aged
832 & 833 Home for the Aged
834 & 835 Home for the Aged
836 & 837 Home for the Aged
838 & 839 Home for the Aged
840 & 841 Home for the Aged
842 & 843 Home for the Aged
844 & 845 Home for the Aged
846 & 847 Home for the Aged
848 & 849 Home for the Aged
850 & 851 Home for the Aged
852 & 853 Home for the Aged
854 & 855 Home for the Aged
856 & 857 Home for the Aged
858 & 859 Home for the Aged
860 & 861 Home for the Aged
862 & 863 Home for the Aged
864 & 865 Home for the Aged
866 & 867 Home for the Aged
868 & 869 Home for the Aged
870 & 871 Home for the Aged
872 & 873 Home for the Aged
874 & 875 Home for the Aged
876 & 877 Home for the Aged
878 & 879 Home for the Aged
880 & 881 Home for the Aged
882 & 883 Home for the Aged
884 & 885 Home for the Aged
886 & 887 Home for the Aged
888 & 889 Home for the Aged
890 & 891 Home for the Aged
892 & 893 Home for the Aged
894 & 895 Home for the Aged
896 & 897 Home for the Aged
898 & 899 Home for the Aged
900 & 901 Home for the Aged
902 & 903 Home for the Aged
904 & 905 Home for the Aged
906 & 907 Home for the Aged
908 & 909 Home for the Aged
910 & 911 Home for the Aged
912 & 913 Home for the Aged
914 & 915 Home for the Aged
916 & 917 Home for the Aged
918 & 919 Home for the Aged
920 & 921 Home for the Aged
922 & 923 Home for the Aged
924 & 925 Home for the Aged
926 & 927 Home for the Aged
928 & 929 Home for the Aged
930 & 931 Home for the Aged
932 & 933 Home for the Aged
934 & 935 Home for the Aged
936 & 937 Home for the Aged
938 & 939 Home for the Aged
940 & 941 Home for the Aged
942 & 943 Home for the Aged
944 & 945 Home for the Aged
946 & 947 Home for the Aged
948 & 949 Home for the Aged
950 & 951 Home for the Aged
952 & 953 Home for the Aged
954 & 955 Home for the Aged
956 & 957 Home for the Aged
958 & 959 Home for the Aged
960 & 961 Home for the Aged
962 & 963 Home for the Aged
964 & 965 Home for the Aged
966 & 967 Home for the Aged
968 & 969 Home for the Aged
970 & 971 Home for the Aged
972 & 973 Home for the Aged
974 & 975 Home for the Aged
976 & 977 Home for the Aged
978 & 979 Home for the Aged
980 & 981 Home for the Aged
982 & 983 Home for the Aged
984 & 985 Home for the Aged
986 & 987 Home for the Aged
988 & 989 Home for the Aged
990 & 991 Home for the Aged
992 & 993 Home for the Aged
994 & 995 Home for the Aged
996 & 997 Home for the Aged
998 & 999 Home for the Aged
1000 & 1001 Home for the Aged
1002 & 1003 Home for the Aged
1004 & 1005 Home for the Aged
1006 & 1007 Home for the Aged
1008 & 1009 Home for the Aged
1010 & 1011 Home for the Aged
1012 & 1013 Home for the Aged
1014 & 1015 Home for the Aged
1016 & 1017 Home for the Aged
1018 & 1019 Home for the Aged
1020 & 1021 Home for the Aged
1022 & 1023 Home for the Aged
1024 & 1025 Home for the Aged
1026 & 1027 Home for the Aged
1028 & 1029 Home for the Aged
1030 & 1031 Home for the Aged
1032 & 1033 Home for the Aged
1034 & 1035 Home for the Aged
1036 & 1037 Home for the Aged
1038 & 1039 Home for the Aged
1040 & 1041 Home for the Aged
1042 & 1043 Home for the Aged
1044 & 1045 Home for the Aged
1046 & 1047 Home for the Aged
1048 & 1049 Home for the Aged
1050 & 1051 Home for the Aged
1052 & 1053 Home for the Aged
1054 & 1055 Home for the Aged
1056 & 1057 Home for the Aged
1058 & 1059 Home for the Aged
1060 & 1061 Home for the Aged
1062 & 1063 Home for the Aged
1064 & 1065 Home for the Aged
1066 & 1067 Home for the Aged
1068 & 1069 Home for the Aged
1070 & 1071 Home for the Aged
1072 & 1073 Home for the Aged
1074 & 1075 Home for the Aged
1076 & 1077 Home for the Aged
1078 & 1079 Home for the Aged
1080 & 1081 Home for the Aged
1082 & 1083 Home for the Aged
1084 & 1085 Home for the Aged
1086 & 1087 Home for the Aged
1088 & 1089 Home for the Aged
1090 & 1091 Home for the Aged
1092 & 1093 Home for the Aged
1094 & 1095 Home for the Aged
1096 & 1097 Home for the Aged
1098 & 1099 Home for the Aged
1100 & 1101 Home for the Aged
1102 & 1103 Home for the Aged
1104 & 1105 Home for the Aged
1106 & 1107 Home for the Aged
1108 & 1109 Home for the Aged
1110 & 1111 Home for the Aged
1112 & 1113 Home for the Aged
1114 & 1115 Home for the Aged
1116 & 1117 Home for the Aged
1118 & 1119 Home for the Aged
1120 & 1121 Home for the Aged
1122 & 1123 Home for the Aged
1124 & 1125 Home for the Aged
1126 & 1127 Home for the Aged
1128 & 1129 Home for the Aged
1130 & 1131 Home for the Aged
1132 & 1133 Home for the Aged
1134 & 1135 Home for the Aged
1136 & 1137 Home for the Aged
1138 & 1139 Home for the Aged
1140 & 1141 Home for the Aged
1142 & 1143 Home for the Aged
1144 & 1145 Home for the Aged
1146 & 1147 Home for the Aged
1148 & 1149 Home for the Aged
1150 & 1151 Home for the Aged
1152 & 1153 Home for the Aged
1154 & 1155 Home for the Aged
1156 & 1157 Home for the Aged
1158 & 1159 Home for the Aged
1160 & 1161 Home for the Aged
1162 & 1163 Home for the Aged
1164 & 1165 Home for the Aged
1166 & 1167 Home for the Aged
1168 & 1169 Home for the Aged
1170 & 1171 Home for the Aged
1172 & 1173 Home for the Aged
1174 & 1175 Home for the Aged
1176 & 1177 Home for the Aged
1178 & 1179 Home for the Aged
1180 & 1181 Home for the Aged
1182 & 1183 Home for the Aged
1184 & 1185 Home for the Aged
1186 & 1187 Home for the Aged
1188 & 1189 Home for the Aged
1190 & 1191 Home for the Aged
1192 & 1193 Home for the Aged
1194 & 1195 Home for the Aged
1196 & 1197 Home for the Aged
1198 & 1199 Home for the Aged
1200 & 1201 Home for the Aged
1202 & 1203 Home for the Aged
1204 & 1205 Home for the Aged
1206 & 1207 Home for the Aged
1208 & 1209 Home for the Aged
1210 & 1211 Home for the Aged
1212 & 1213 Home for the Aged
1214 & 1215 Home for the Aged
1216 & 1217 Home for the Aged
1218 & 1219 Home for the Aged
1220 & 1221 Home for the Aged
1222 & 1223 Home for the Aged
1224 & 1225 Home for the Aged
1226 & 1227 Home for the Aged
1228 & 1229 Home for the Aged
1230 & 1231 Home for the Aged
1232 & 1233 Home for the Aged
1234 & 1235 Home for the Aged
1236 & 1237 Home for the Aged
1238 & 1239 Home for the Aged
1240 & 1241 Home for the Aged
1242 & 1243 Home for the Aged
1244 & 1245 Home for the Aged
1246 & 1247 Home for the Aged
1248 & 1249 Home for the Aged
1250 & 1251 Home for the Aged
1252 & 1253 Home for the Aged
1254 & 1255 Home for the Aged
1256 & 1257 Home for the Aged
1258 & 1259 Home for the Aged
1260 & 1261 Home for the Aged
1262 & 1263 Home for the Aged
1264 & 1265 Home for the Aged
1266 & 1267 Home for the Aged
1268 & 1269 Home for the Aged
1270 & 1271 Home for the Aged
1272 & 1273 Home for the Aged
1274 & 1275 Home for the Aged
1276 & 1277 Home for the Aged
1278 & 1279 Home for the Aged
1280 & 1281 Home for the Aged
1282 & 1283 Home for the Aged
1284 & 1285 Home for the Aged
1286 & 1287 Home for the Aged
1288 & 1289 Home for the Aged
1290 & 1291 Home for the Aged
1292 & 1293 Home for the Aged
1294 & 1295 Home for the Aged
1296 & 1297 Home for the Aged
1298 & 1299 Home for the Aged
1300 & 1301 Home for the Aged
1302 & 1303 Home for the Aged
1304 & 1305 Home for the Aged
1306 & 1307 Home for the Aged
1308 & 1309 Home for the Aged
1310 & 1311 Home for the Aged
1312 & 1313 Home for the Aged
1314 & 1315 Home for the Aged
1316 & 1317 Home for the Aged
1318 & 1319 Home for the Aged
1320 & 1321 Home for the Aged
1322 & 1323 Home for the Aged
1324 & 1325 Home for the Aged
1326 & 1327 Home for the Aged
1328 & 1329 Home for the Aged
1330 & 1331 Home for the Aged
1332 & 1333 Home for the Aged
1334 & 1335 Home for the Aged
1336 & 1337 Home for the Aged
1338 & 1339 Home for the Aged
1340 & 1341 Home for the Aged
1342 & 134

David William Rice, Park Tavern, 212 Merton road	Dawson Joshua, sanitary engineer 11 Atmstrong terrace, Withorpe road	Denny Edward H., jobbing gardener, 7 Elizabeth place, Methodist street	Doerr Priestella (Mrs.), baker, 1 Keswick terrace, Garratt lane
Davidson Charles S., electrical engineer to Barnes Urban District Council, High street, Mortlake	Dawson Wm. H., watchman, 45 High st. p. l.a.c.p., 59 Lymington road	Denny E. (Miss), dress maker, 26 Battersea rise	Dommon Thomas, grocer, 69 Sealeigh road; 1 Sandlewood road & 38 Merton rd
Davies & Sons, dairymen, 10 Barnmouth rd	Davies Alfred, dairy, 10 Andrey terrace, North Worple way, Mortlake	Denny Rosa (Mrs.), general shop, 56 High street, Mortlake	Dooday Zeph., builder &c., 86 Chatham road & 76 Sandlewood road
Davies Charles Wm., architect, Comberton, 4 West side, Wandsworth common	Davies David, confectioner, 319 York rd	Derrick John, dining rooms, 5 Althorp terrace, Garratt lane, W	Doran Henry, leaguer & bronzier, 82 Lower Richmond road
Davies Eliza Jane (Mrs.), beer retailer, 82 Hope street	Davies Florence E. (Miss), teacher of music, 56 Clonah road	Derrick Henry, tailor, 98 Melody road	Dore Andrew, freengrocer, 286 Replinkham road
Davies Henry, spread dealer, 124 Old rd	Davies James, cabinet maker, 43 Burr rd	Derrick August, tailor, Jessica road	Dore Daniel, corn merchant, Burntwood cottage, Garratt lane
Davies John, dairyman, 126 Lower Richmond road	Davies John, general shop, 46 Linda st	Derrill Brothers, oilmen, 164 Upper Richmond road, W	Dorling Robert, greengrocer, 12 Maudslow terrace, Garratt lane, W
Davies Miss, dairy, 10 Worple way	Davies Mrs., news agent, 9 Webb's road	Dewar Alfred, hoster, 73 & 75 High st. W	Dorling Robert, greengrocer, 3 Thornssett rd
Davies S. & Co., limited, entire house furnisher, 24 St. John's road, B	Davis Brothers, builders, 78 High street, Mortlake	Dickenson Wm., brewer, 119 North st	Dorrier John, beer retailer, 303 York rd
Davis & Sherr, joiners, 5 Sheen lane; workshop, Sheen lane, Mortlake	Davis, Young & Dickson, physicians & surgeons, 10 Sheen Gate gardens	Dickenson John, baths, 72 St. John's hill	Douglass & Martin, photo, 16 Bellevue rd
Davis & Co., wardrobe dealers, 77 & 79, Bellevue road	Davis Alfred, grocer, & post office, 5 Bellevue road	Dickson Francis & Son, builders, 63 Bramfield road & workshop, 23 Chatham rd	Doughy Edward C., professor of music, 354 York road
Davis Charles, confectioner, 8 The Terrace, Upper Richmond road	Davis (Chatter), wardrobe dir., 427 York rd	Dickson William, Gilbert M.P., physician & surgeon, Pinbank, West h.l.p.	Doughy Thos., haberdash, 120 High st. W
Davis David, dairy, 2 Burrer, Merton rd	Davis E. Hayland, artist, 15 Elm Grove rd	Dickson Ernest, William, agent to the Prudential Assurance Co., limited, 17 Middlefield road	Doughy Thos., haberdash, 120 High st. W
Davis Frank, Thos. grocer, 77 White Hart la	Davis Gertrude (Miss), draper, 28 Bellevue road, T	Dillon R., Westworth, L.R.C.P., London, M.R.C.S., physician & surgeon, 39 Aldingfield lane	Dowglas Harriet A. (Mrs.), dress maker, 129 Norroy road
Davis John, builder, Dytburgh road	Davis Miss, pastry cook, 14 Elm Grove parade, Church road, Barnes	Ding E. (Miss), teacher of pianoforte, 62 Haldon road	Dowglas Miss, dress ma., 10 Stanton road
Davis Sarah Ann (Mrs.), Coach & Horses P.H., 27 High street, Barnes	Davis Thos. bicycle ma., 26 High st., Barnes	Dixie John, shopkeeper, 24 Medfield st	Dove H., Geo., butcher, 71 Northcote rd
Davis Thos. bldg. & dealer, 209 Merton rd	Davy D. (Mrs.), furn. dir., 3 Battersea rise	Dixie Walter James, shopkeeper, 94 Putney Bridge road	Dowman J. S., pawnbroker, 5 Plough rd
Davy Ernest, bruce, 104 St. Battersea rise	Davy Miss, laundry, 166 Merton road	Dixon J. & Son, nurserymen, 18 North side, Wandsworth common	Dowman J. S., pawnbroker, 5 Plough rd
Daws Edward, grocer, 8 The Broadway	Daws Walt. H., furn. dir., 30 St. John's h	Dixon (Charles), deaconess, 2 Chivalry rd	Downing Henry, baker, 19 High Road terrace, Garratt lane
Dawson & Co., lim. brick, lime & cement merchant, Mendip wharf, Mendip rd.	Dawson Annie (Miss), dress maker, 149 High street, P	Dixon Frederick, Arthur, Quill Farrer, Charlwood road	Downing H. Baker, 50 Putney Bridge rd
Dawson George, beer ret., 67 Hilbert st	Dawson Geo. S., greengro., 22 Bellevue rd	Dixon Geo., H. accountant, 6 Arundel ter	Downing H. Baker, 50 Putney Bridge rd
		Dixon (George) Thomas, baker, 67 Lavenham road	Downing H. Baker, 50 Putney Bridge rd
		Dixon H. L., fruiterer, 3 Wandsworth plain	Downing H. Baker, 50 Putney Bridge rd
		Dixon James, fruitier, 258 York road	Downing H. Baker, 50 Putney Bridge rd
		Dobbs A. & Son, greengrocers, 125 Darnell rd	Downing H. Baker, 50 Putney Bridge rd
		Dockrill S. & Son, builders, Thornhill works, Decolar road	Downing H. Baker, 50 Putney Bridge rd
		Dodd Henry, clothier, 21 The Terrace, Merton road	Downing H. Baker, 50 Putney Bridge rd
		Dodd Isaac, plumber, 50 Derby road, Upper Sheen	Downing H. Baker, 50 Putney Bridge rd
		Dodd P. A.M.I.C.E., surveyor for Western district, Borough of Wandsworth, 41 High street, W	Downing H. Baker, 50 Putney Bridge rd
		Dodson Arthur E. M.R.C.S. Eng., L.R.C.P., physician & surgeon, 75 Whitefield rd	Downing H. Baker, 50 Putney Bridge rd
		Doe Herbert W. A.R.I. N.A., architect & surveyor, 54 Elborough street	Downing H. Baker, 50 Putney Bridge rd

548 BOT

WANDSWORTH, PUTNEY, BARNES, ETC.

TRADES DIRECTORY—1904.

OHM 539

HOOT & SHOE MANUFACTURERS—CON.
Mansell Ralph Walter, 70 Battersea Rise,
Wandsworth common
Marley Robert, 371 Earlsfield road & 30
The Grove

BOTTLE MERCHANT & GENERAL DEALER.

Wheeler Samuel, Carter's yard, High
street, Wandsworth

BOYS' OUTFITTERS.

BAKER CHAS. & CO. LTD., Limited,
271, 272, 273 & 271 High Holborn;
137, 138, 139 & 140 Tottenham Court
road; 256 Edgware road; 41 & 43
Ludgate hill; 5, 7 & 9 Seven Sisters
road & 27 to 33 King street, Han-
mersmith

BRASS FINISHERS & POUNDERS.
Harlick Brothers, Oak place, East
hill, Wandsworth

BRASS PLATE ENGRAVERS.

Brown H. & W. (General engravers, die
sinkers & stencil cutters), 29 Fulham
road, South Kensington

BREWERS.

**BRANDON'S PUTNEY BREWERY LIM-
ITED.**, Gardeners lane, Putney
COLLIER BROTHERS, Baker Brewery.
Walthamstow; West End branch, 277
York road, Battersea W
GORDON A. & CO., Lyndhurst road,
Peckham S.E. & 423 Caledonian rd S
TOOTING BREWERY LIMITED (THE),
High street, Tooting Graveyard
William Brothers Limited, "The Hall"
Guinea, "The Brewery", Stockwell S.W.
14 Parsons' mead, Croydon; The
Square, Richmond; also at 51 Hoster
street, Reading

BRICK LIME & CEMENT MER.

MAY MENRY S. (William Cooke & Co.),
Prince's Wharf, Jew's Row, Wandsworth

BRICK & TILE MAKERS.

**WEST BROTHERS, LOMBARD WHARF
(OFFICES) & BRIDGE DEPOT, LOM-
BARD ROAD, BATTERSEA, S. W.**
Building bricks & tiles of all kinds;
fire bricks, tiles & limps &c. &c.
Telephone 243 Battersea. Telegrams,
"Calcis, London." See page 142a

BRICK MAKERS—PATENT.

Younger, Saunders & Co. Limited, 6
Santos rd. & The Point, Wandsworth

BUILDERS & CONTRACTORS.

Alhway (Chas. T. 3 Cambridge rd, Barnes
PUNKLEY F. W. Station road, Barnes
Easton George, 153 Lavalluade road
HARBER JAMES (& estate agent), 2
Moutholme rd, Wandsworth common
KENSHAW W. J. 243 Upper Richmond
road, Putney

BUILDERS & DECORATORS.

ADAMSON T. H. & SONS, 129 High
street, Putney
ADKINS WILLIAM & SONS (& reg.
plumbers), Medfield street & 5 High
street, Roehampton
Alfred Thomas, 12 Edwards terrace,
Garrair lane, Wandsworth
Bodman Jns. Baldwin, 164 Northcote rd
Bolton William H. (& gasfitter), 17
Northcote road
CASTLE & SONS, Replingham road,
Wandsworth
COLLINS CHARLES D. (undertaker &
monumental mason), 6 Station ter-
race, Garrair lane
Cooper J. Mulliner & Co. (& undertakers)
78 Lebanon garden, Wandsworth
DAKIN H. & CO., 133 The Crescent;
Grand parade & railway arches, Upper
Richmond road, Putney. Telephone
No. 5 Putney P.O.
Driscoll J. H. & Sons (& sanitary en-
gineers), 17 Boulton road, Battersea
FROST F. & SONS, 201A York road & 25
Alma road; offices, 24 Ebor street,
Wandsworth
Goodchild Walter F. 33 Trinity road,
Upper Tooting
HARVEY JOHN, Roehampton lane,
Roehampton, Telephone No. 116 Putney
Hayes & Co. 21A, St. Leonard's road,
East Sheen
HEARN GEORGE S. 225 & 227 Upper
Richmond road, Putney
HORRYN CHARLES, Goldsworth
works, Heathfield road, Wandsworth

HUDSON BROTHERS, 207 St. John's
hill, New Wandsworth. T. N. 321
Battersea
JONES TOM (& painter & paperhangr),
196 Upper Richmond road, Putney
PEARCE W. H., 53 Gardeners la, Putney
RENSHAW W. J. 243 Upper Richmond
road, Putney
Roffey Hy. 26 & 28 Charnwood rd, Putney

SAMWAYS A. W. (& undertaker), 8
Nottingham road, Upper Tooting
Sheppard & Co. 27 Kyle road, New
Wandsworth

SHUTE WILLIAM, 10 Chelverton road,
Putney

THEBE EDWARD, 4 Deodar rd, Putney
WILLIAMS WILLIAM ROBERT, 98
High st. & Derwent works, Cooper's
Ains lane, Putney
Withers Walter, 62 East h. Wandsworth

BUILDERS' MERCHANTS.

**WEST BROTHERS, LOMBARD WHARF
(OFFICES) & BRIDGE DEPOT, LOM-
BARD ROAD, BATTERSEA, S. W.**
Brick, tile, lime, cement, sand & ballast
merchants, white & brown stoneware,
sanitary goods of all kinds, fire goods,
Telephone 243 Battersea. Telegrams,
"Calcis, London." See page 142a

BUTCHERS.

Falton & Co. 74 Lower Richmond road
FINLAY & CO., 119 High street, Putney
Miller G. S. & Sons, 2 Belvedere rd, Tooting
RICH MENRY J. 66 & 68 St. John's hill,
New Wandsworth
Shepperson Henry, 201 Lower Richmond
road, Putney

CAB & CARRIAGE PROPRIETOR.

Rowbrough John, 43 Southfields road

CABMEN & CONTRACTORS.

HAMPTON WILLIAM, Railway wharf,
York road
Newman John & furniture remover, 2 & 5
Boyce's cottages, Garrair la, Brixfield
Parter John Thomas, 11 Berrish road &
Lower Richmond road, Putney

CARPENTER & JOINER.

JONES TOM, 196 Upper Richmond
road, Putney

CARPET & BUG WAREHOUSES.

MARSHALL & SHELROVE, 10 to 20
Vere street; 334 to 348, 362 & 364
strand street; 16 to 20 Henrietta
street; 2 to 24 Marylebone lane W
WAND.

**CARPET BEATERS & CLEANERS
BY STEAM POWER.**

ARMFIELD & SONS; chief office, 64
Dunry street S.W. (Telephone No. 478
Westminster); 15 Lower Belgrave
street S.W. (Telephone No. 394 West-
minster); 11 Church street, Kenning-
ton W. (Telephone No. 1563 Kenning-
ton); 172 Lavender hill S.W.; Imperial
Dye Works, Clapham junction S.W.
(Telephone No. 67 Battersea)

LONDON STEAM CARPET BEATING CO. LIMITED.

Furnage street, Garrair
lane, Wandsworth. Telephone 189
Battersea; & Conlan street, Ken-
nington W. Telephone 882 Paddington
road W.
**PATENT STEAM CARPET BEATING
CO. LIMITED**, carpets beaten in any
weather. Carpets freed from dust by
compressed air. Works, 136 York
road, King's cross N.; T. N. 520 King's
Cross; T. A. "Prindale", London;
Chamberwell Station S.E.; T. N. 1226
Hlop; Thornton Heath, Croydon; T. N.
5 Croydon; Laitner road, Notting
hill W.; T. N. 50 Paddington; 375
King's road, Chelsea S.W.; T. N. 64
Kensington; West End lane, Hamp-
stead S.W.; T. N. 1311 Paddington;
126 & 128 H. street, Hammersmith N.E.;
T. N. 391 Belsdon; Ashdown road,
Kingston; T. N. 111 Kingston; Quaker
works, Lee green S.E.; T. N. 39 Lee;
Tottenham green, Finchley & Gunners-
bury lane, Acton W.; T. N. 149 Ealing

CARPET & TAPESTRY CLEANERS.

**THE COMPRESSED AIR CARPET &
TAPESTRY CLEANING CO.** Brook
green, Hammersmith W.; office, 135
Victoria street, Westminster S.W.;
T. N. 288 Westminster; 93 Ham-
mersmith; T. A. "Purifying, London"

CARPETS & FLOORCLOTHS.

ROBERTS J. R. STORES LIMITED,
Broadway, Stratford, London E. 8c;
advertisement centre of book

CEMENT & LIME MERCHANT.

Little William J. Frogmore wharf,
Wandsworth; telegraphic address,
"Diminutive," T. N. 144 Battersea

14

Derris Alfred, 63 Maudslayi road
Derwin John, 22 Northam road
Deverell Geo, Thos, 57 Leathwaite rd
Devonshire William, 4 West End Grove
Devonshire, Abbotshale
Dew Albert, 36 Lavenham road
Dew Frederick, 6 Kyrie road
Dew Howard, 319 Bennett road
Dew Robert, 77 Honeywell road
Dew Walker, 69 Althering lane
Dew William, 64 Disraeli rd
De Wail, Bertha, Philip Henry Overbeck
De Wail Rectory, Church road
Devar Alfred, 146 Meriton road
Devar James, 81 Bournemouth road
Devar John, 29 Colquhoun street
Dewdney E. W., Ridgey, S.A.
Dewdney, Woodhouse road
Dewe William, 41 Haultrey estate
Dewey Joseph, 47 Maypole road
Dehurst Arnold, Wm, Beverley gates
De Wilde George, 56 Lewin rd, Mortlake
Dewing Thomas, 15 Lower Park fields
Dexter Fredrick, Arthur, 14 Elber st,
Dexter John, 57 Birch Road park road
Dexter John, 46 Market road
Dible Charles, 19 Daminore street
Dibble Charles, 43 South Worple way,
Mortlake
Dibben Henry, Arthur, 22 Blenheim rd
Dibbon Tom, 36 Alma road
Didkin Joseph, George, 12 Challo road
Diddys Mr., 22 Disraeli road
Dicconson Harry, 40 Elm Grove road
Dick Sir James Nicholas, S.N., K.O.R.
Agriculture, English road
Dick F. Burnett, 8 Diarmid carleton,
Kew Park road
Dick James, 17 Crancho Court road
Dick John, Wilfrid, 37 Fetterton road,
Donk Mr., 89 Stanger park
Dick Thomas, 64 Brownwood road
Dick Thomas, 4 Colford road
Dickens John, 51 The Grables, Rushton rd
Dickenson J. G. Swanwick ter, Warple road
Dickenson John, 13 Grosvenor road
Dickenson John, 38 Altheia, Mortlake
Dickier Herbert John, 147 Newry road
Dickier Seymour, 29 Schinbert road
Dickier Ward, Orchard rd, Richmond
Dickson Charles, 1-26, Hocherwood rd
Dickson William, 29 Garrett lane T. 43
Dickett Chas. J. Oke, St. Ann's rd, Barnes
Dickie Arthur, 5 Duval road
Dickies Charles, 97 Arkway street
Dickies Mrs. Jas. Lover pl. 64 Pinner hls
Dickies Chas. J. A. Kirkdale, 51 Pinner hils
Dickins Charles (Thomas), Broken west,
Hastings, common
Dickins Fred, L. Dunchur, 28 Bushelton rd
Dickins Herbert Arthur, Fairbank, T.Y.
kon Grove
Dickins Philip, 85 Boles road
Dickins Stephen, 23 Brandon road
Dickinson Bernard, Griston, 87 Caselmst
Dickinson Charles, 28 King's rd, Mortlake
Dickinson Thomas, 38 Eborac road
Dickinson William, 48 I. Wilby street
Dickinson, William, 511 West hill, P.M.D.
Elmhurst, West hill, p.
Dickson William, James, 10 Idmby,
Willa, Upper Richmond rd, East Sheen
Dick's Alfred, 44 Itzary hall
Dick's Frederick, 23 Salcott road
Dick's Herbert Geo, 122 Grandison road
Dick's John Wm, 49 Brocklebank road
Dicksee Arthur, Stanwell by Jford, rd
Dicksey Captain, 61 Denmark road
Dickson Captain W., 5 Denha road
Dickson James, 267 Fairfield road
Dickson James, 15 Roskill road
Dickson John, 63 College street
Dickson John, 6 Malvern road
Dickson March 17, Mercat street
Dickson Mark, W. J. 27 Casteal, mace
Dickson William, 12 Chalk wren road
Dickson William, 71 Honeywell road
Dickson William, 174 Low Ashdown rd
Dickson Daniel, 82 Barley road
Dickson Albert Frank, 106 White Hartla
Digby Albert Edward, 10 Knoll road
Digby Charles, 25 Colongate street
Digby Charles, 25 Colongate street, 106
Upper Richmond road
Digit William, 88 Strand road
Digweed Jacob, 35 High street, R.
Digweed Thomas, 25 Norfolk road
Diley George, 34 Balvairne grove
Dillon Henry, 41 Garrison h., T. 6
Dillon John, 43 Bunsbury road
Dillon Mrs. 49 Melody road
Dillon E. Wentworth, 1-12, Cr. farm,
M.C.S. 30 Allfarthing lane
Dilow William, 367 Barfield road
Dimont George H. 8 Elmestreet
Dimes George, 46 Barnard road
Dimmock Henry, 16 Dalewood garden,
Balvairne Grove
Dimmock Bernard, 20 West rd, Mortlake
Dimec Michael, 40 Broadwater road
Dines Miss, 29 Arkway street
Ding Miss, 62 Halton road
Ding William, 62 Halton road
Dingle Samuel, Thomas, 66 Bonhill rd
Dinnore Miss, 165 Lower Richmond rd
Dinner William, 9 Prospect place
Diplock James Langham, Exmouth, 10
Grand road
Dipple George Arthur, 19 Garray street
Diaper Thomas Joseph, 117 Maryland rd
Dixey Henry, 8 West Hill road
Dixon John, 24 Lilian road
Dixie Ernest, Boston Oakhill road
Dive Thos. Edward, 61 Low Richmond road
Dive Walter Edward, 6 Almore terrace,
Malva road
Divers Mrs. (Stanton bo.), 1 Belleville rd
Dives H. Alison, 86 Disraeli gardens,
Bechee road
Driscoll John, 35 Brandford road
Dry Charles, 19 Collage street
Dry Mrs. 12 Harman mans, St John's h
Drye Mr. 12 Harman mans, St John's h
Dixie Albert, 8 Bramfield road
Dixon Albert Edward, Meredith, Church rd
Dixon Charles, 17 Marsden road
Dixon Charles, 17 Marsden road
Dixon Charles James, 9 Olivet street
Dixon Frederick, 24, Buccall street
Dixon Frederick, 48 Buchanan street
Dixon Geo, 1 Church cois, Church pass
Dixon George Edward, 12 Flavell road
Dixon George Henry, 6 Arundel terrace
Dixon Henry William, 374, Trenham rd
Dixon James, 55 Fullerton road
Dixon James (Mecklenburg villa) 20
North side, Wandsworth common
Dixon James, 37 Wingham grove
Dixon John, 16 Broxhall road
Dixon John, 87 Plough road
Dixon John, 87 Plough road
Dixon John, 87 Plough road
Lyford road
Dixon John Richard, 219 Broomwood rd
Dixon John Robert, 31 Wroughdon road
Dixon Mrs. 6 Borneo street
Dixon Mrs. 6 Borneo street
Dixon Mrs. Brangana, 12 Spencer park
Dixon Thos Geo, 1 Orchard rd, Richmond
Dixon William, 48 Lilian road
Dixon William John, Laburnum villa,
46 Lonstable road
Doabin William, 27 Point Pleasant
Dobbs Arthur, 13 Bechee road
Dobbs Arthur Ernest, 127 Disraeli road
Dobbs Frederick, 125 W. Witha road
Dobbs William J. M.A., 37 Schubert road
Doble John, 49 Geraldine road
Dobie Joseph William, 77 The Grove
Dobney Joseph James, 30 The Crescent
Dobson Rev. Richard Augustus, M.A.
St. Michael's vicarage, Viewfield road
Dobson Arthur Edwin, Elmide, 1
Rushmore road
Dobson Charles Henry, 62 Chaldan rd
Dobson Frederick, 32 Gray street
Dobson George, 44 South Worple way,
Mortlake
Dobson John, 19 King's road, Mortlake
Dobson Mrs. 1, Appleby road
Dobson Noah, 8 Worple road, Mortlake
Dobson Stephen, 12 Ashleigh rd, Mortlake
Dobson Treherne, 20 Norroy road
Dockertill Horrope, 15 Marcus street
Dockrell Samuel, Thornhill house,
Deodar road
Dod Henry, 24, Topoley road
Dod Henry Charles, 61, 10, Richmond rd
Dod Frank, 18 Second avenue
Dodd Mrs. Strling, 204, Barknare au
Dodd Peter C.E. Fairlie, 23 West side
Wandsworth common
Dodd William, 10 Windmill road
Dodge Mrs. 39 Camyn road
Dodge Arthur, 41 Bewell road
Doddman James, 3 South street
Doddman Mrs. 223 Broomwood road
Dodon Arthur E. M.R.C.S. Eng., L.B.P.
75 Kensington road
Dodson Richard, 117 Kailway street
Dodson Thomas William, 7 Middleton rd
Dodson William, 5 The Terrace
Dodwell W. S. 22 Noosha road
Doe Horle W. A.E.I.B.A. 64 Elkborough s
Doe John, 27 Jew row
Doe Willie, 26 Bramford road
Doerr John C. 337 Kensington road
Doggert George, 114 The Grove
Doherty Hugh, 11 Kensington road
Doir William, 19 Clarendon road
Doyle Ernest Richard, 21 Henderson rd
Dolly George Henry, 73 Brookrick road
Dolly Mrs. Fern villa, 30 Belleville rd
Dolling Caleb, 14 Northumberland ter-
race, Dyers lane
Dolling Mrs. 3 Benjamin street
Dolan Francis, 142 Lower Richmond rd
Dolan Robert E. A. 14 Banahag gardens
Dolphin James N. 3 Jersey road
Dolphin Richard Jones (88 Milbro)
17 Hollingbrook grove
Dolphin William John, 73 Penwith rd
Domoney Charles, 32 Thorne street
Domonte Frank, 65 The Grove
Don Miss, 13 Carmant gardens
Donald George, 2 Elizabeth place.
Donald George, 2 Elizabeth road
Donald John Fraser, East lo, Melrose rd
Donald Louis, 30 Clarendon road
Donaldson Arthur John, 31 Dulka road
Donaldson Charles John, 69 Fairfield rd
Donaldson Clement Twining, St Ivea,
Marboro' road
Donaldson Miss, 26 Middleston road
Doncaster Arthur, Triberg, 26 Barfield rd
Donnerfeld Miss, Thberg, 26 Barfield rd
Done Frederick, 3 Sandogwa place
Donkey James, 124, Colmore road
Donkin Richard Sims Albemarle, Park
side, Wimbledon common
Donnelly Charles Robert, 23 Parma cres
Donnelly Edwin, 29 Astoria street
Donnelly Malachi, 114, Salvyn terrace,
Warple road, P.
Donnelly Mrs. 83 Chevelton road
Donnelly Robert H. 35 Birthurst road
Donnelly William, 43 Trammere road
Donnan Thomas, 23 Groundford rd
Donoghue Charles Alfred, 162 Mayo road

As well as these sections, there were full or half-page advertisements scattered through the volumes, with a list of advertisers. These can give a great deal of information about the firm or shop, sometimes with a photograph of the premises. There were also a few full page photographic illustrations each year, for example the mayor of that year, or of a public building, such as the public library. These, with the advertisements, are a largely untapped source of illustrative material of people and places no longer in existence.

A folding street map of the area to a scale of 4" to 1 mile was included, but these have rarely survived except in the British Library copies.

Both Hutchings & Crowsley and later Kelly's would alter the area covered by any particular title, probably for sound commercial reasons. It makes life hard for the researcher, however, although the title was usually altered as well; and up to 1922 the title page included a description of the area. This gave north, south, east and west boundaries varying in precision from a named street to an indeterminate area such as 'Clapham.'

CHAPTER VI: UNION LIST OF KELLY'S DIRECTORIES (THE "BUFF BOOKS")

A union list of the six Kelly's titles which contain in whole or in part any area of the Metropolitan Borough of Wandsworth and Battersea before 1965. These are:

Balham, Tooting & Merton
Kennington, Battersea & South Lambeth
Brixton & Clapham
Putney & Roehampton
Sydenham, Norwood & Streatham
Wandsworth, Putney, Wimbledon etc.

The holdings of the Wandsworth Collection, the Guildhall Library and the British Library are given for each title, with the holdings of the Lambeth Archives Dept. (Minet Library), and the Tate Library Brixton (Lambeth Libraries Service) added where appropriate. See also the Appendix of Libraries.

The list shows the years available, with notes on changes of title, area covered, any years it was not published, the survival of maps, etc.

The symbols used for the libraries are:

W Wandsworth Collection (Battersea Library)
G Guildhall Library
B British Library
L Tate Library Brixton (Lambeth Libraries Service)
M Lambeth Archives Dept. (Lambeth Libraries Service
at Minet Library)

A note on the dating of the directories

The publishers sometimes used the form 1885, sometimes 1913/14 to indicate the year of publication, and sometimes the title page would differ from the cover. The date in the lists is that of the title page in every case.

BALHAM, TOOTING AND MERTON

<u>Issue</u> <u>No.</u>	<u>Year</u>	<u>Location</u>				<u>Issue</u> <u>No.</u>	<u>Year</u>	<u>Location</u>			
		L	B	G	W			L	B	G	W
1	1890		o		o	17	1906/7		o	o	
2	1891		o			18	1907/8		o	o	o
3	1892		o	o		19	1908/9		o	o	
4	1893		o	o	o	20	1909/10	o	o	o	o
5	1894		o	o	o	21	1910/11	o	o	o	
6	1895/6		o	o		22	1911/12	o	o		o
7	1896/7		o	o		23	1912/13		o	o	o
8	1897/8		o	o	o	24	1913/14	o	o	o	
9	1898/9		o	o		25	1914/15	o	o	o	o
10	1899/00		o	o		26	1915/16	o	o	o	o
11	1900/1		o	o	o						
12	1901/2		o	o	o	27	1921	o	o	o	o
13	1902/3		o	o	o						
14	1903/4		o			28	1923	o	o	o	o
15	1904/5		o	o		29	1924	o	o	o	o
16	1905/6		o	o	o	30	1925	o	o	o	o
						31	1926	o	o	o	o
						32	1928	o	o	o	o

Not published 1916/17-1920, 1922, 1927.

Area covered from 1890 to 1923: extends to Earlsfield and Wimbledon Park north and west, Mitcham etc. south, Clapham and Streatham east.

Then titled BALHAM AND TOOTING from 1924 (area covered not given on title page)

Maps British Library has maps in all its copies except that for 1899/1900
Wandsworth has 1902/3, 1907/8, 1921, and 1928.
Guildhall and Lambeth (Brixton): no copies have maps.

BRIXTON AND CLAPHAM

Issue No.	Year	Location					Issue No.	Year	Location				
		M	L	B	G	W			M	L	B	G	W
1	1880(?)						23	1903/4			o	o	
2	1882				o		24	1904/5	o		o		o
3	1883						25	1905/6			o	o	
4	1884				o	o	26	1906/7	o		o	o	
5	1885				o	o	27	1907/8		o	o	o	o
6	1886				o		28	1908/9			o	o	
7	1887/8				o	o	29	1909/10	o	o	o	o	
8	1888/9				o		30	1910/11			o	o	o
9	1889/90	o	o	o	o	o	31	1911/12	o		o	o	
10	1890/1	o			o		32	1912/13		o	o	o	o
11	1891/2				o		33	1913/14		o	o	o	o
12	1892/3	o	o	o	o		34	1914/15	o	o	o	o	
13	1893/4				o	o	35	1916	o	o	o	o	o
14	1894/5				o		36	1917		o	o	o	
15	1895/6				o	o	37	1918			o	o	
16	1896/7				o	o	38	1920	o	o	o	o	
17	1897/8				o	o	39	1922		o	o	o	
18	1898/9	o	o	o	o	o	40	1923	o		o	o	o
19	1899/00				o	o	41	1924	o	o	o	o	o
20	1900/1				o		42	1925	o	o		o	o
21	1901/2	o			o	o	43	1926	o	o		o	o
22	1902/3				o	o	44	1928	o	o		o	

The earliest catalogue reference is to a first edition of 1880, but the earliest edition examined is the second, of 1882.

It was not published in 1919, 1921 or 1927.

Hutchings and Crowsley published to the year 1886, with the title *The Brixton, Clapham and South Lambeth Directory*. In 1885 the sub-title *Buff Book* was added. The area was described as extending from Kennington Oval & Camberwell New Road on the north-east to Balham Railway Station south-west, Wandsworth Road and Lavender Hill north-west to Loughborough Park and Tulse Hill south-east.

Kelly's published from the 7th issue of 1887/8 and at first included Herne Hill and Tulse Hill, but from the 10th issue of 1890/1 it was again the *Brixton, Clapham and South Lambeth Directory*. The area was then described as extending from Kennington Oval to Camberwell New Road north-east, to Balham Railway Station south-west, and from Lavender Hill &c. north-west, to Loughborough Park and Tulse Hill south-east.

From the 19th issue of 1899/1900 the title was changed to *Kelly's Directory of Brixton and Clapham* without any apparent change of area.

Maps: All British Library copies have maps
The Wandsworth collection's 1902/3, 1904/5 and 1926 copies have maps
Guildhall and Minet copies have none. Brixton Library's copies for 1909/10 and 1925 have maps.

PUTNEY AND ROEHAMPTON

Issue No.	Year	Location			
		L	B	G	W
1	1929		o	o	
2	1930		o	o	
3	1931	o	o	o	
4	1932		o	o	o
5	1933		o	o	o
6	1934		o	o	o
7	1935		o	o	
8	1936		o	o	o
9	1937		o	o	o
10	1938	o	o	o	o
11	1939		o	o	o

PUTNEY AND ROEHAMPTON was a late-comer as a separate directory, the area having been previously in the WANDSWORTH directory.

Maps British Library copies all have maps. Wandsworth, Guildhall and Lambeth (Brixton) have none.

(Kennington), BATTERSEA AND SOUTH LAMBETH

Issue No.	Year	Location			
		B	G	W	
3	1888	o		o	
4	1889	o	o	o	
5	1892/3	o	o	o	
6	1893/4	o	o	o	
7	1894/5	o	o	o	
8	1895/6	o	o	o	
9	1896/7	o	o	o	
10	1897/8	o	o	o	
11	1898/9	o	o	o	
12	1899/00	o	o		
13	1900/01	o			
14	1901/02	o	o	o	
15	1902/03	o	o	o	
16	1903/04	o	o	o	
17	1904/05		o	o	

The earliest edition examined was the 3rd issue, 1888. Not published 1890 or 1891, then the 5th issue was published as 1892/3.

The earliest title was the KENNINGTON, BATTERSEA AND SOUTH LAMBETH DIRECTORY; it was described as covering the whole of Kennington, Battersea and South Lambeth, extending to the River Thames on the west, Newington Butts, Kennington Park Road etc. on the east, Westminster Bridge Road and St. George's Road on the north, to Battersea on the south.

From the 5th issue, 1892/3, the title was the BATTERSEA AND SOUTH LAMBETH DIRECTORY, and it extended to the river on the west, Clapham Road on the east, Kennington on the north and Clapham on the south.

Maps

British Library has maps in all its copies
Guildhall Library has 1904/5
Wandsworth has 1894/5

Sydenham, Norwood and STREATHAM

<u>Issue</u> <u>No.</u>	<u>Year</u>	<u>Location</u>					<u>Issue</u> <u>No.</u>	<u>Year</u>	<u>Location</u>				
		M	L	B	G	W			M	L	B	G	W
1	1881	o		o			25	1906	o		o	o	
							26	1907			o	o	
3	1884	o		o			27	1908			o	o	
4	1885			o	o		28	1909	o	o	o		
5	1886	o		o			29	1910	o	o	o		
6	1887	o		o			30	1911	o	o	o		
7	1888			o			31	1912	o	o	o		
8	1889	o		o	o		32	1913	o	o	o		
9	1890			o			33	1914	o	o	o		
10	1891	o		o			34	1915	o	o	o		
11	1892	o		o	o		35	1916	o	o	o		
12	1893			o	o		36	1917	o	o	o		
13	1894	o		o	o		37	1919	o	o	o		
14	1895	o		o	o		38	1920	o	o	o		
15	1896	o		o	o		39	1921	o	o	o		
16	1897	o		o	o		40	1922	o	o	o		
17	1898	o		o	o		41	1923	o	o	o		
18	1899	o		o			42	1924	o	o	o	o	
19	1900			o	o		43	1925	o	o	o		
20	1901	o		o	o		44	1926/7		o	o		
21	1902	o		o	o		45	1930	o	o	o		
22	1903	o		o	o		46	1932			o	o	
23	1904	o		o	o		47	1934	o	o	o	o	
24	1905	o		o	o		48	1936			o	o	
							49	1938	o	o	o	o	

The Minet Library's copy of the first issue, 1881, is the earliest of any of the series to be examined. It has the original cover bound in. The spine title on the library binding is Sydenham, Norwood & Streatham, although Streatham was not in fact included at this date. The date on the binding is 1882, but the preface is dated November 1881.

The first issue was published as The Sydenham and Norwood Directory, but the area covered is not described on the title page. No copy of the second issue could be examined, but the third issue, for 1884, included Streatham, with the title The Sydenham, Norwood & Streatham Directory. It extended to Dulwich Common and Honour Oak north, to Beulah Hill and Crystal Palace south, and from Streatham west to Lower Sydenham and the London Brighton & South Coast Railway east.

The sixth issue, for 1887, was still published by Hutchings & Crowsley: a copy for 1888 could not be examined; in 1889 it was published by Kelly's.

From 1892 the title was The Sydenham, Forest Hill, Norwood & Streatham Directory, but the area described on the title page was unaltered. In 1899 the area was described as extending from Dulwich north, to Beulah Hill and Crystal Palace south, from Streatham west, to Forest Hill and Lower Sydenham east.

In 1907 the title was Sydenham, Norwood & Streatham Directory. Two years later, with the 28th issue, of 1909, it was titled The Streatham & Norwood Directory, and was described as extending from Brixton and Tulse Hill north, to Beulah Hill and Norbury south, and from Tooting west to Crystal Palace and Sydenham east.

In 1919 the title was changed to The Streatham, Norwood and Norbury Directory, and finally in 1930 it was titled simply Kelly's Streatham Directory.

It was not published in 1918; the 44th issue was for 1926 and 1927, and it was not published in 1928, 1929, 1931, 1933, 1935 or 1937.

Maps: All the British Library copies have maps, except for 1884.
Minet Library's copy for 1886 and Brixton Library's for 1938 have the maps.
No Wandsworth copies have maps.

WANDSWORTH

<u>Issue</u> <u>No.</u>	<u>Year</u>	<u>Location</u> B G W			<u>Issue</u> <u>No.</u>	<u>Year</u>	<u>Location</u> B G W		
1	1883				28	1910/11	o		o
2	1884	o		o	29	1911/12	o		o
3	1885	o		o	30	1912/13	o	o	o
4	1886	o		o	31	1913/14	o	o	o
5	1887	o	o		32	1914/15	o	o	o
6	1888	o			33	1915/16	o	o	
7	1889	o	o	o	34	1916/17	o	o	o
8	1890	o			35	1918	o	o	o
9	1891	o		o	36	1919	o	o	o
10	1892	o	o		37	1920	o	o	
11	1893	o			38	1921	o	o	o
12	1894	o	o	o	39	1922	o	o	o
13	1895	o	o	o	40	1923	o	o	o
14	1896	o	o	o	41	1924	o	o	o
15	1897	o	o	o	42	1925	o	o	o
16	1898	o	o	o	43	1926	o	o	o
17	1899	o	o		44	1927	o	o	o
18	1900	o	o	o	45	1928	o	o	o
19	1901	o	o	o	46	1929	o	o	o
20	1902	o	o	o	47	1930	o	o	o
21	1903	o		o	48	1931	o	o	o
22	1904	o	o	o	49	1932	o	o	o
23	1905	o	o	o	50	1933	o	o	o
24	1906	o	o	o	51	1934	o	o	o
25	1907	o	o	o	52	1935	o	o	o
26	1908	o	o	o	53	1936	o	o	o
27	1909/10	o		o					

Published by Hutchings & Crowsley 1883-1886. The 2nd issue, for 1884, is the earliest edition examined. Not published 1917.

The Wandsworth directory had more changes of title and area covered than any others in the borough. Although the name of Battersea only appeared in the title from 1925 to 1930, large areas of Battersea were always included, duplicating many streets in the short-lived (Kennington) Battersea and South Lambeth directory.

Titles and area covered:

1883 to 1886:

The Wandsworth, Putney, Wimbledon, Tooting &c. directory. Extends from the River north; High Street Merton south; and from Wimbledon and Putney Commons west; to Clapham & Tooting Commons east

1887.

Cover title: Kelly's directory of Wandsworth, Putney, Wimbledon, Tooting &c.
Area as before.

1888-1890

Cover title: Kelly's directory of Wandsworth, Putney, Tooting, Merton, Barnes & Roehampton.

Area covered: River Thames on the north; Merton south; Barnes & Roehampton west; Clapham & Streatham east.

1891-1902

Title page: Kelly's Wandsworth, Putney, Barnes &c. directory.

Area covered: River north; Earlsfield south; Barnes & Roehampton west; Clapham & Balham east.

1903-1915/16

Title page: Kelly's Wandsworth, Putney, Barnes, Mortlake, Sheen &c. directory.

Area covered: River north; Earlsfield south; Mortlake, Sheen & Roehampton west; Clapham & Balham east.

1916/17-1924

Title page: Kelly's Wandsworth, Putney, Barnes &c. directory.

Area covered: River north; Earlsfield south; Roehampton west; Clapham & Balham east. From 1922 the area is not shown on the title page.

1925-1930

Title page: Kelly's Wandsworth, Putney, Barnes, Battersea (pt. of) &c. directory.

1931-1936

Kelly's directory of Wandsworth.

All the British Library copies have maps, except for 1929.

None of the Guildhall Library or Wandsworth collection copies have maps.

CHAPTER VII: LATER NINETEENTH CENTURY DIRECTORIES, OTHER THAN KELLY'S

All are in the Wandsworth Collection unless otherwise noted.

ABC 1871

The ABC Court directory and fashionable guide for 1871 including London and the twelve mile radius. London, Effingham Wilson, 1871. 512pp.

Although the preface was written from 213a Clapham Road, which should argue some local knowledge, it provides meagre information; for example, Putney and Tooting have only two columns each, and Wandsworth only two pages. It has a streets section to which there is an index of names, but the name references have to be sought in page-length columns.

SOUTH LONDON SUBURBAN 1873-4

The South London suburban directory for 1873-4...containing a comprehensive street guide, and alphabetical list of the inhabitants, trades directory and various useful local and other information. London, Effingham Wilson, 1873. 312pp.

The only improvement on the 1871 edition is that the full address is given for each name in the index. The publisher states that as a rule no inhabitant occupying a house of less than £30 annual value is included.

COURT GUIDE 1872-3

The Court guide and commercial directory and gazetteer for Wandsworth (postal district of), Wimbledon (Old and New), Roehampton, Putney, etc. London, Green & Co., 1872.

This was the first edition of a new work by the same publisher as that of 1869. Each place has a separate section, with a page or two of descriptive text, then an alphabetical commercial list. The court guide is also alphabetical. It is not in the Wandsworth Collection.

Cordingley 1875

Cordingley's Court guide and directory of Hammersmith, Chiswick, Gunnersbury, Acton, Shepherd's Bush and Turnham Green. London, Charles Cordingley, 1875. 238pp.

Although not included in the title, pages 160-220 are Cordingley's Putney and District Court Guide and Directory, followed by a short section on Barnes. For each section there are simple alphabetical lists of residents' names and addresses followed by traders' names and addresses, with a few advertisements.

STRONG 1878

Directory for Battersea Rise, Clapham and Wandsworth Commons, 1878. Battersea, J. Strong, 1878. Various paging.

This, and the 1880 edition were, like the Metallurgicon of 1867, local directories in every sense. The compiler James Strong had been butler to the Vicar of Battersea, but at this time was a waiter, and ran a firm which hired waiters for wedding breakfasts, parties etc.

He describes the area covered as being to Victoria Road, Clapham in the east; East Hill on the west; New Wandsworth and Lavender Hill north; and St. Nicholas Road south.

Following the usual local information, the streets section gives some topographical detail, with many individual house names, cottages etc. The references from the alphabetical lists of residents' names to the streets section are to page-length columns, which then have to be searched. The emphasis is on private residents rather than trades.

STRONG, 1880

Directory for the Postal District of Wandsworth, including parts of Clapham, Balham and Upper Tooting. Battersea, James Strong, 1880. 197pp.

Published, like the first edition, from 21 Abyssinia Road.

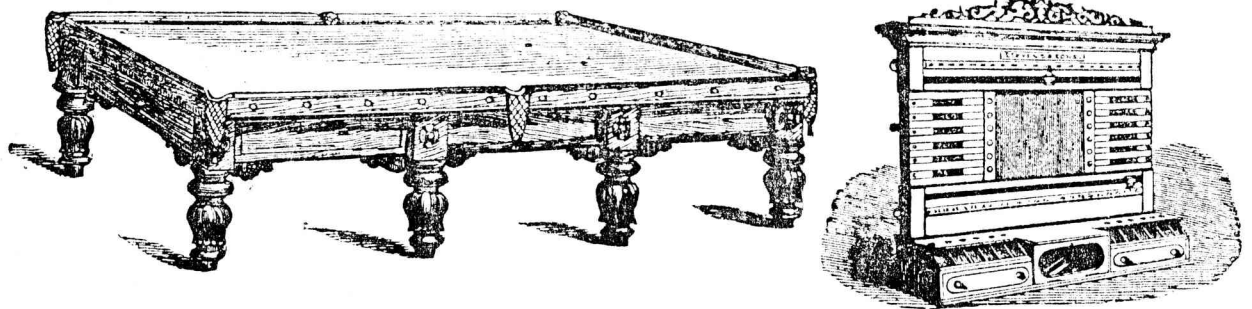
The boundaries are described as westward, Wandsworth; northward, New Wandsworth and Lavender Hill; southward, Nightingale Lane and Upper Tooting; and eastward Victoria Road, Clapham, and follows the form of the first.

STEVENS & SONS,

MANUFACTURERS OF

Superior Billiard and Bagatelle Tables & Billiard Room Furniture.

Full-size Club Match Billiard Tables, 40, 45, 50, and 60 Guineas.



Only Exhibitors, Paris Exhibition, 1878.

STEAM WORKS—ST. JOHN'S HILL, CLAPHAM JUNCTION,

OFFICE—VILLIERS STREET, CHARING CROSS STATION.

Advertisement from Strong's Directory, 1880

- Walterston E. J. 3 Springfield villa, Upper Richmond road
 Wadlin Mrs, 84 High street
 Wauey Mrs, 4 Putney hill
 Watson Miss, 16 Putney hill
 Wells H. 59 Disraeli terrace, Disraeli road
 Wentworth Mrs, Fern cottage, 17 Charlewod road
 West D. 25 Disraeli road
 West F. Heath side, Upper Richmond road
 Weston J. 24 the Cedars
 Weston J. P. Disraeli road
 Wheatley Capt. J. Hampton house, Upper Richmond road
 Wheeler J. 8 College street
 Whicker M. W. Elleray, Portinckle road
 Whicombe J. Falcon lodge, Upper Richmond road
 White Mrs, 2 Windsor place, Lower Richmond road
 Whitehurst F. R. Cambridge cottage, Upper Richmond road
 Whitman R. H. M.D. Hotham house, 96 High street
 Whicker Marmaduke W. Elloray, Portinckle road
 Whitaker Mrs, 5 Marches place, Lower Richmond road
 Whittingback F. Ashon villa, Upper Richmond road
 Wild Mrs, 9 Gordon terrace
 Wilkinon J. 7A Charlewod rd
 Wilcox J. 3 Disraeli terrace, Disraeli road
 Wilder J. 8 Alexander terrace, Upper Richmond road
 Williams C. E. 17 Upper Parkfield
 Williams Mrs, 3 River street, Windsor street
- Williams Mrs, 21 the Cedars
 Williams S. the Laurels, Upper Richmond road
 Wilson J. Ruskin house, Upper Richmond road
 Wilson J. 1 Lower Parkfield
 Wilson J. Twentham, Carlton rd
 Wilson Mrs Worlabye, Upper Richmond road
 Wilson T. C. Hollywood villa, Upper Richmond road
 Wilson W. 3 Uva road, St. John's road
 Winble E. Millbourne lod, Upper Richmond rd, 3 and City, Carlton St, Stephens clubs, London
 Windsor R. 8 Marches place, Lower Richmond road
 Winslow T. E. Mariborough house, Upper Richmond road
 Wise W. the Hollies, Disraeli rd
 Withall R. A. Brankson, Lynton grove
 Wood E. C. 18 Lower Parkfield
 Wood F. 2 Osborne villas, Gardens lane
 Wood R. 2 Platfield villas, Gardens lane
 Wood Miss, the Limes, Upper Richmond hill
 Wood W. 11 Putney hill
 Wood W. H. Plat villa. Gardens lane
 Woolley G. R. Melbourne lodge, Carlton road
 Woolley Mrs, 9 Station street, Lower Richmond road
 Workman Rev. M. Richard, M.A., 18 the Cedars
 Wren J. 2 Stratford grove
 Wright W. Q. 33 the Cedars, Wandsworth lane

- Wright H. W. 25 Spencer road
 Wright Mrs, 9A Charlewod rd
 Wyman W. S. M.D., F.R.C.S., Eng. Westlands, Upper Richmond road
 Yapp P. S. Blenheim lodge, Upper Richmond road
- Young J. 28 College street
 Young J. 1 Hotham Villas road
 Young Mrs, 3 Marches place, Lower Richmond road
 Young W. D. Lamark house, Disraeli road

JOHN FARMER,
PHARMACEUTICAL CHYMIST,
 10, HIGH STREET, PUTNEY.

Established by him in 1830.

Manufacturer of Aerated Waters by Improved Machinery, by which all metallic contamination is avoided. Importer of all the Foreign mineral waters at reduced prices.



JOHN NOBLE,
CHRYSTAL, GLASS & CRYSTALLINE,
WINDSOR STREET, PUTNEY.

Estimates for General Repairs.

Every description of Blinds made to order and repaired.

Agent to the Westminster Fire Office.

ESTABLISHED 1717.

Here is Park Road.

- 15 Lynes, Thomas J.
 13 Vince, Charles H., Ivy cottage
 11 Mansell, Thomas } Cambridge villas.
 9 Fynn, Arthur F.
 7 Stone, G. A.
 3 Ashwell, L. T.
 1 Patten, L. P.
 2 Henderson, Mrs. } Albert villas.

St. James' Road, Upper Footing, S.W.*From Wandsworth Common to Trinity Rd.*

- Price, Charles, The "Hope Tavern"
 1 Hopkinson, Henry
 3 Atchison, J. H.
 4 Gough, Geoffrey W.
 5 Gauthier, Miss
 6 Grogg, John
 7 Allen, James G.
 8 Pratt, Capt. Sisson C. Claremont villa
 9 Lombard, Mrs.
 10 Urvick, T. A.
 11 Wall, Charles

Lord, William, Barton villa
 Dunkley, G. Northampton villa
 Hingworth, G. Heyes villas
 Williams, Mrs. Clifton villa
 Carter, G. S. Heath villa, professor of music

- Sellingswood, Moline, Hay villa
 2 Fairbairn, A. M. } Shanklin villas.
 1 Matthews, Dr.
 Stevenson, William, Woolthine cottage
 2 Eyre, William H. solicitor } Hyde
 1 Allen, John } park villa
 Clayton, Alfred, Graythorne
 25 Clorg, Rev. W. H.
 26 Webb, Benjamin W.

Martin, Frederick, Melford villa
 Jaffe, Herr, Clerken lodge
 Edmunds, John, Southampton villa
 Nicholson, W. Heathcote
 Milner, S. Garibaldi lodge, ladies' school

Here is Nettingham Road.

- 2 Howell, W. H. } Stanley villas
 1 Crawford, H.
 Ellis, G. Cromwell villa
 Hamilton, E. T. Monk villa

Minson, G. S. Fern cottage
 Minson, G. Hlon cottage
 Netterington, J. F.
 Peppercorn, Miss, Camden villa

Here is Broadrick Road.

Johnson, John, Fern villa, architect
 Fry, Herbert, The Hermitage
 Freeman, J. Diphport villa
 Collingwood, A. Arundel lodge
 Princes, J. Highclere
 Goshing, William, Edgumbe villa
 Turner, H. The Hawthorns
 Gough, Frederick, The Hawthorns

RETURN.

Bell, W. The Selva
 Burrell, Percy, The Quinta
 Hayward, H. Elmourt
 Dantlop, J. The Elms

St. Johns Hill, New Wandsworth.*From Lavender Hill to East Hill.*

Brown, J. G. "The Falcon"
 Brown, H. conkeeper

Devonshire place.
 1 Dennis, John
 2 Warner, George
 3 Bradshaw, Watson
 4 Milton, J. W.
 5 Maplesdon, W. china dealer
 6 Phillips, C. draper

1 Broad, Mrs. } Tynd cottages.
 2 Chaplain, Ernest M.
 1 Wilson, Mrs. } Granl's cottages.
 2 Murray, Mrs.

1 Haines, C. confectioner
 2 Cooke, Mrs. baby linen
 3 Gray, Miss, fancy repository.
 4 Smith, E. J. stationer

Commerce place.
 1 Heger, T. H. "The"
 Windsor Castle"
 2 Gee, Charles
 3 Porter, Thomas
 1 Jenkins, Joseph W.

Rankings, Augustus, Junction house
 3 De Carteret, Major W. H.
 4 Amor, William, Laurel villa

Here is path leading to L. B. & S. C. R.
 Here is road leading to L. & S. S. W. R.

King, Frederick, Holly lodge
 Urvick, S. J. Westwood house
 Crisp, Henry, Chesterfield house
 Battersea Grammar School, head master
 Rev. E. A. Richardson, M.A.

Here is Plough Lane, East.

Thornon, builder
 Patchin, J. house decorator
 Butter, K. & Co. grocers, wine & spirit
 merchants
 Clark, Thomas, butcher
 Eass, G. Violet cottage
 Kelly, John, The Arcades
 Trigg, G. greengrocer
 Downey, Mrs. fancy repository

Hardwick, J. bookseller and stationer
 Emery, C. A. tobacconist
 Honick, baker and confectioner
 Lemson, newsagent
 Quir, C. cab proprietor
 Southon, J. "Surrey Hounds"

Winter, Rev. C. St. John's Hill House
 Academy

Here is Plough Lane.
 Here is St. Paul's Church.
 Here is Broadrick Road.

1 Herington, William Henry, solicitor, commissioner for oaths & parliamentary agent
 2 Golding, Misses, ladies school
 3 Ralph, J. surveyor of taxes office
 4 Wilson, Joshua
 5 Stevens, Arthur
 6 Fraser, Mrs.
 7 & 8 Lee, Miss Jessie

Here is Lavender Road.
 4 Dickens Brothers, grocers &c.
 Post Office and Savings Bank
 3 Crosby, James, dispensary chemist
 2 Woodward, draper, Manchester b.
 1 Ford, W. china dealer

Willesliffe, R. P.
 3 Carter, Clifford
 2 Carter, Miss
 1 Hodder, Miss

Here is St. John's Hill Gate.
 Morgan, A. B. "Napier Arms"
 4 Bamel, John
 3 Martin, William
 2 Halloway, John
 1 Woolhaort, Edward

Alma place.
 Louvaine terrace.
 4 Dickens Brothers, grocers &c.
 Post Office and Savings Bank
 3 Crosby, James, dispensary chemist
 2 Woodward, draper, Manchester b.
 1 Ford, W. china dealer

Willesliffe, R. P.
 3 Carter, Clifford
 2 Carter, Miss
 1 Hodder, Miss

Here is St. John's Hill Gate.
 Morgan, A. B. "Napier Arms"
 4 Bamel, John
 3 Martin, William
 2 Halloway, John
 1 Woolhaort, Edward

Alma place.
 Louvaine terrace.
 4 Dickens Brothers, grocers &c.
 Post Office and Savings Bank
 3 Crosby, James, dispensary chemist
 2 Woodward, draper, Manchester b.
 1 Ford, W. china dealer

Willesliffe, R. P.
 3 Carter, Clifford
 2 Carter, Miss
 1 Hodder, Miss

Here is St. John's Hill Gate.
 Morgan, A. B. "Napier Arms"
 4 Bamel, John
 3 Martin, William
 2 Halloway, John
 1 Woolhaort, Edward

Alma place.
 Louvaine terrace.
 4 Dickens Brothers, grocers &c.
 Post Office and Savings Bank
 3 Crosby, James, dispensary chemist
 2 Woodward, draper, Manchester b.
 1 Ford, W. china dealer

Willesliffe, R. P.
 3 Carter, Clifford
 2 Carter, Miss
 1 Hodder, Miss

Here is St. John's Hill Gate.
 Morgan, A. B. "Napier Arms"
 4 Bamel, John
 3 Martin, William
 2 Halloway, John
 1 Woolhaort, Edward

Wardrobe Dealers.

Ellis, Mrs. Balham Hill,
Lloyd, Mrs. St. George's place, Battersea rise

Watchmakers.

Alew, J. 5 Hopefield terrace, Battersea rise
Gassell, C. East hill, Wandsworth
Gaydon, T. J. 6 Chestnut grove, Balham
Griffith, W. Trinity road, Upper Tooting
Harvey, H. T. St. Ann's hill, Wandsworth
Marwaring, E. 2 Basnett terrace, Lavender hill
Venning, J. H. 2 Balham place, Balham hill
Whithead, Cedars row, Lavender hill
Williams, H. St. John's hill, New Wandsworth

Window Blind Makers.

Gainsford, E. 2 Portland place, Balham
Picking & Son, Battersea rise

A. ROUTLEDGE,

China and Glass Dealer,

BATTERSEA RISE, S.W.

Any Article Matched on the Shortest Notice.
Rivetting done on the Premises.

A. ROUTLEDGE,

General Ironmonger, &c.

BATTERSEA RISE, S.W.

LAMPS & BOTTLE JACKS CLEANED & REPAIRED.

Brooms, Brushes, Mats, and Wood Turner of
every Description.

WILLIAM P. MILLER,

Architect and Surveyor,

1, FULLERTON ROAD,

EAST HILL, WANDSWORTH.



JAMES STRONG,

(Late Butler to the Vicar of Battersea).

WAITER,
21. AFRYSSINIA ROAD, BATTERSEA RISE, S.W.

Dinners, Wedding Breakfasts, and Evening Parties attended.
Established 1872. *Waters Supplied.*

MADAME DELAHAYE,

(FROM PARIS).

7, WAKEHURST ROAD, NORTHCOTE ROAD,

BATTERSEA RISE, S.W.

PROFESSOR of the FRENCH LANGUAGE (Diploma from the
French University). Schools and Families attended. Pupils
prepared for Examinations. Afternoon Classes for Young Ladies of
any age. Every subject taught through French.

Terms on application.

HOUSES TO BE LET

AT

BOLINGBROKE GROVE,

St. John's Hill, Clapham Junction ;

GIPSY HILL,

Close to Station ;

ADDINGTON SQUARE, CAMBERWELL.

Rents from £26 to £80.

For particulars apply to Mr. S. A. DENT, at the offices of the Surplus Land and House Property Trust, 6, Bolingbroke Grove Villas, Wandsworth Common, S.W.

Tenants on the Estate may pay their rents to the account of JAMES LORR, Esq., with the London and South Western Bank, Bank Buildings, Wandsworth, S.W.

Estate Office :

MR. W. DENNISTON,

6, BOLINGBROKE GROVE VILLAS,

Wandsworth Common, S.W.

WANDSWORTH COMMON. About 12 minutes' walk from Clapham Junction or from Wandsworth Common Station. Newly-erected houses, occupying a pleasant and open situation immediately facing the Common. They are of neat elevation, and have forecourts with small gardens in the rear. One (a corner house) contains 5 bedrooms, 2 sitting rooms with folding doors, another sitting room ; ante-rooms, breakfast room, kitchen, larder, &c. Rent £65 per annum. The adjoining house, 5 bed and 3 sitting rooms, 2 kitchens, scullery, pantry, &c. Rent £60. The adjoining house has 5 bed and 2 sitting rooms, kitchen, scullery, &c. Rent £50. The corner house has a side entrance, and others communicate with a private passage in the rear. Personally inspected. *Dobson, Tasson, and Farmer's list.*

BOLINGBROKE GROVE (No. 12). Wandsworth Common ; 6 bed rooms, drawing room, dining room, breakfast room, kitchen, scullery, larder, 2 w.c.s, Gas, Bay Windows, &c. Rent £50.

DARLEY ROAD, Wandsworth Common.—A 6-roomed house ; double bay windows, Gas, &c. ; few yards from Common ; Rent £30 ; back looking on to private path of about 100 acres ; about 10 minutes from Clapham Junction or Wandsworth Common Station ; fares from Waterloo, Victoria, Dagenham Hill, or London Bridge, 1s. 6d. per week ; also one with 2 rooms over back kitchen, with sinks and ovens ; Rent £36.

TO BUTCHERS.—Opening in a new neighbourhood, where a good butcher's shop is much required, 68, Chatham-road, Wandsworth, Common. A larger corner SHOP. Handson front, in a street ; 3 bed rooms, drawing room, parlour, kitchen, scullery, larder, &c. ; private entrance at side ; Gas, &c. ; Rent £55 ; on agreement or on lease, 7, 14, or 21 years.

CHATHAM ROAD, £26. Tenant paying Rates and Taxes, 6-roomed house, bay windows, &c., somewhat similar to the Darley Road houses.

Some adjoining or neighbouring Property is announced and described as follows :—

BOLINGBROKE GROVE ESTATE, Wandsworth Common.—This delightful estate faces the best part of Wandsworth Common, commanding charming views, is about 15 minutes' walk from Clapham Junction or from Wandsworth Common Station (4, 10, & S. C.), directly and easily accessible from all parts of London, within half-an-hour's drive of Charing Cross, the West End, Crystal Palace, Wimbledon, &c., surrounded by the commons and best parts S.W. London, and near to churches of all denominations, good schools, physicians, &c. The salubrity of the situation is evidenced by the number of institutions in the neighbourhood. The drainage completed under the superintendence of the Board of Works.

CHAPTER VIII: USING DIRECTORIES FOR LOCAL HISTORY RESEARCH

Directories give quite a lot of information about a place, but there are limitations. They are not necessarily accurate or complete, and their contents are in the main only listings. These listings are in themselves limited: for example, at each private address only the name of the householder is given. As a result even important residents like the poet Swinburne at 'The Pines', Putney Hill, would be excluded. Directories can be used as a starting point for research, or as a link or cross-check with other sources, e.g. census records, maps and rate-books.

With these constraints in mind, these are some of the ways in which local directories can be used for research:

1. From a local directory for one particular year a picture can be built up of a district or community or even a few streets at any one point in time.
2. By following through from year to year, the development of one area or of one street can be traced from its first appearance, showing changes in use of any one building or premises over the years.
3. The history of one's own house can begin with its first appearance in the streets section. The names of previous occupants can then be found year by year.
4. By the use of detailed comparison with other areas in the same town, or with other towns, of, for example, the density of certain industries or the provision of churches or public institutions, or amenities such as libraries, public baths, or cinemas can be assessed.
5. The development of any one industry or trade could be studied from a long run of directories showing how it built up or declined. One published piece of research, from outside this area, studied the furniture industry around Tottenham Court Road, using mainly these sources. For a gazetteer of local mineral water manufacturers, see *The Wandsworth Historian*, No.19, October 1978.
6. An important use of directories is simply as a quick reference source, much as they were used when they were current, but using the information for historical purposes. Some examples are: the vicar of a church, the name of the Member of Parliament, the location of a street or building, or a list of the church schools.
7. For use in family history, where an exact address is not known, the alphabetical list of residents or the alphabetical commercial directory is an important first source because many other sources - census returns, voters' lists and rate-books - are only in street order.
8. The advertisements are a source of trade history, of social history and of commercial graphic art. Some may give the date of establishment of the business, or show a picture of the shop or articles manufactured.
9. The full-page illustrations in Kelly's *Buff Books*, the portraits of Mayors, for example, or the photographs of public buildings, are a source largely untapped.
10. The date of a photograph or picture of a main street can sometimes be determined by comparing the traders' names or buildings shown with those listed in the directory.

CHAPTER IX: USING DIRECTORIES: SOME NOTES AND WARNINGS

The physical condition of some library copies may be poor: sometimes the paper was of poor quality and has become brown and brittle. Some libraries have old working copies which have had a year's heavy use before going on file so pages may be missing or worn. Re-bound copies may show different dates, depending on whether the date was taken from the old publisher's casing or from the title-page.

Because local directories were commercial, not official, publications, the publishers could exclude any information they wished: there was no statutory obligation, as with registers of electors, to be either complete or up to date. Usually paid agents gathered the information, but if they could not obtain it the entry might be copied from the previous year or left blank. In some directories a payment had to be made to be included in the classified trades section.

To find some districts or streets may need a careful search. The names given may have changed: Garratt was a name given to a separate district in some directories, while Southfields has been hidden away listed as a street. The area around Battersea Rise and St. John's Road was known as New Wandsworth for many years.

Houses in the early directories were often un-numbered, even after 1847 when it became obligatory.

Changes of street names and of house numbers must be very carefully watched. It must never be assumed that a street name or house number found in an earlier directory is identical with the present one. Some streets may even have changed more than once. It is wise to keep a constant check on the continuity of occupants' names - and of the neighbouring premises. Official Orders for street name changes and for re-numbering were made by the Metropolitan Board of Works (1855-1889), the London County Council (1889-1965) and the Greater London Council from 1965. The LCC published two lists of street names (see bibliography) which index the earlier ones, giving the date of the change in each case. Each has a main alphabetical sequence, and a list of abolished names: the 1929 edition for 1856-1929; the 1955 edition for 1929-1954, with a supplement of 1967 collating changes for 1955-1966.

The Official Order sometimes has a very helpful large scale map attached. The original Orders are at the GLC Street Naming Section at Middlesex House, 20 Vauxhall Bridge Road, SW1.

Bibliography

Catalogues and Bibliographies

British Library. *Catalogue of printed books*. (Directories will be found under the heading DIRECTORIES II. Local; then alphabetically by place).

Guildhall Library. (An unpublished catalogue is kept at the Enquiry Desk).

Gross, Charles W. *The London directories 1677-1855: a bibliography*. Archer, 1932.

Norton, Jane E. *Guide to the national and provincial directories of England and Wales, excluding London, published before 1856*. Royal Hist Soc., 1950.

Books and Articles

London County Council. *List of the streets and places within the Administrative County of London*. 3rd ed., 1929. (Includes a list of street names abolished between 1856 and 1929).

London County Council. *Names of streets and places in the Administrative County of London including the names of blocks of dwellings, parks and open spaces. . . together with the particulars of Orders made since 1856 relative to street names and numbers*. 4th ed., 1955. (Includes a list of names abolished since 1st August 1929).

Greater London Council. *Supplement to the names of streets and places in the former Administrative County of London for 1955-1966*. 1967.

Duggan, Edward P. Industrialization and the development of urban business communities: research problems, sources and techniques. *Local Historian* (11) 1975, pp.457-65.

Norton, Jane E. The Post Office London Directory. *The Library*, 5th series (21) 1966, pp.293-99.

Oliver, J.I. Directories and their use in geographical enquiry. *Geography* (49) 1964, pp.400-409.

Shaw, Gareth. The content and reliability of nineteenth century trade directories. *Local Historian* (13) 1978, pp.205-209.

Timmins, Geoffrey. Measuring industrial growth from trade directories. *Local Historian* (13) 1979, pp.349-352.

Wild, P. The use of business directories in comparing the industrial structure of towns. *Local Historian* (12) 1976, pp.152-6.

Page, David. Commercial directories and market towns. *Local Historian* (11) 1974, pp85-8.

Note: Most of the articles listed are based on studies of places and industries outside London, but they are useful sources on directories generally, and on research methods.

Appendix: Libraries where Directories can be Consulted

Wandsworth Libraries Local History Collection,
Battersea Distict Library,
Lavender Hill,
SW11 1JB.

Guildhall Library (Corporation of London),
Aldermanbury,
EC2P 2EJ.

The British Library,
Great Russell Street,
WC1B 3DG.

Lambeth Archives Department,
Minet Library,
52, Knatchball Road,
SE5 9QY.

Tate Library Brixton (Lambeth Amenity Services)
Brixton Oval,
SW2 1JG.

Local Studies Collection,;
The Royal Borough of Kensington & Chelsea,
Central Library,
Phillimore Walk,
W8 7RX.

Westminster City Archives Department,
Victoria Library,
160, Buckingham Palace Road,
WS1 9UD.

