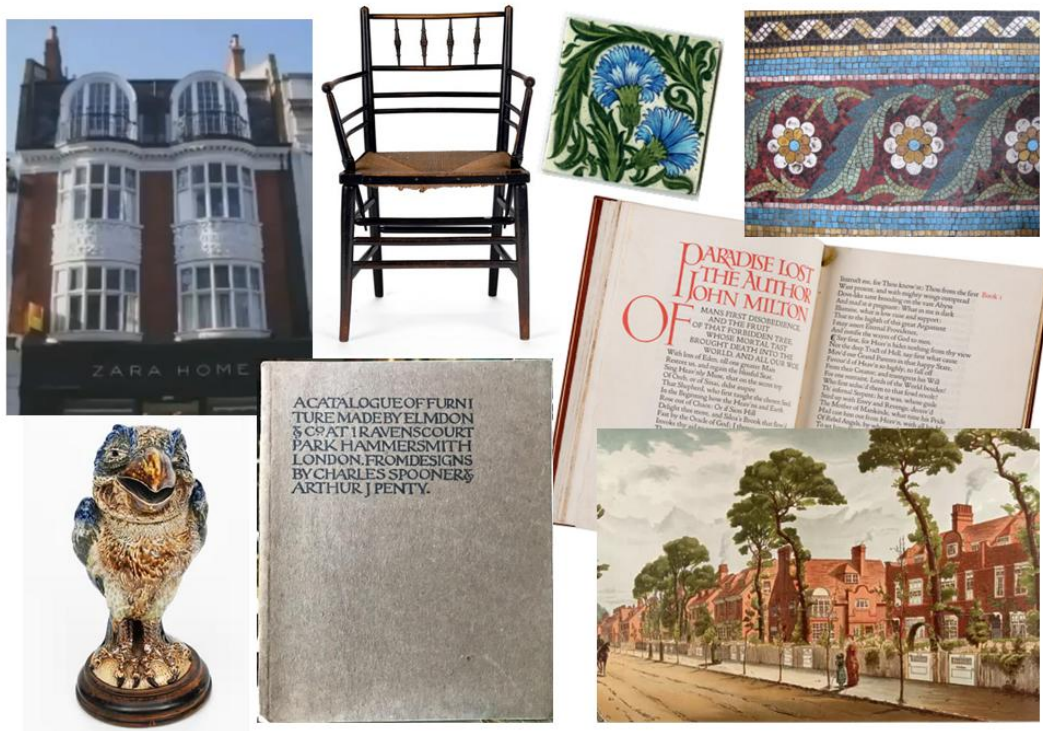


43rd West London Local History Conference

'BY HAND & EYE'

the creative tradition in the past of
South & West London

Saturday 13 April 2024



Mallory Horrill on the Kelmscott & Doves Presses
Chris Jordan on the Martin Brothers
Sarah Hardy on William De Morgan
Ilona Jesnick on Rust & Co's mosaics
James Marshall on Arthur J Penty
Val Bott on Bedford Park homes, and
Paul Velluet on Richmond's Arts & Crafts Architecture

**A one-day conference at
Duke Street Church, Duke Street, Richmond**

Tickets £15.00 on sale at

www.ticketsource.co.uk/west-london-local-history-conference

Conference sponsored by the local history societies for Acton, Barnes & Mortlake,
Brentford & Chiswick, Fulham & Hammersmith, Hounslow, Richmond,
Twickenham, Wandsworth and the West Middlesex Family History Society

43rd West London Local History Conference

BY HAND & EYE ~ the creative tradition in the past of South & West London

PROGRAMME for 13 April 2024

We are delighted to present our first in-person conference since 2019. This year's theme explores the Arts and Crafts Movement of the late 19th and early 20th centuries. A number of designers and skilled craft workers were to be found in the area covered by our sponsoring societies and the fashionable style also influenced the design of local architecture.

- 9.30 **Doors open** to admit participants – societies' stalls will be open for browsing
- 9.45 **Welcome & house-keeping**
Annie Greene, Chair, West Middlesex Family History Society & Conference Co-Chair
- 9.55 **Arts & Crafts Homes and their furnishings in Bedford Park**
Val Bott, Editor, *Brentford & Chiswick Local History Journal*
- 10.30 **COFFEE & BOOKSTALLS**
- 11.00 **Arthur J Penty (1875-1937) of Isleworth, Arts & Crafts Architect & Socialist**
James Marshall, Hounslow & District History Society
- 11.30 **Arts & Crafts Printing: the Kelmscott & Doves Presses**
Mallory Horrill, Senior Curator, Emery Walker's House
- 12.15 **LUNCH**
- 1.10 **Welcome to the afternoon session**
Neil Robson, Editor, *The Wandsworth Historian* & Conference Co-Chair
- 1.20 **The Martin Brothers: Potters of Fulham and Southall**
Dr Chris Jordan, independent researcher and lecturer on Martinware
- 2.00 **Rust & Co, Vitreous Mosaic Manufacturers of Lambeth and Battersea**
Dr Ilona Jesnick, Past Editor, *Andamento*, Journal of the British Association of Modern Mosaic
- 2.40 **TEA & BOOKSTALLS**
- 3.10 **William de Morgan: the Chelsea Potter**
Sarah Hardy, Director of the William De Morgan Museum
- 3.50 **Arts & Crafts Architecture and Design in Richmond and the surrounding areas**
Paul Velluet, architect, historian & President of Richmond Local History Society
- 4.30 **Thanks and summary** of the day's proceedings as the **Conference ends**

Duke Street is 5 minutes' walk from Richmond Station which is served by the District Line, London Overground and South West Trains from Waterloo as well as the Windsor, Wimbledon and Reading lines.

Buses 33, 65, 110, 190, 337, 371, 419, 490, 493, H37 and R70 serve The Quadrant and George Street. Nearest car park: The Old Deer Park, NCP car park Richmond Station. Limited parking around The Green.

Richmond has many cafés and sandwich outlets for lunch, all within a five-minute walk